

Recombinant Full Length Human SPDL1 Protein, Flag tagged

Cat. No. SPDL1-1395H Lot. No. (See product label)

SPECIFICATION

Product Overview	Recombinant protein of human coiled-coil domain containing 99 (CCDC99) with Flag tag was expressed in HEK293.
Species	Human
Source	HEK293T
ProteinLength	1-605 aa
Description	This gene encodes a coiled-coil domain-containing protein that functions in mitotic spindle formation and chromosome segregation. The encoded protein plays a role in coordinating microtubule attachment by promoting recruitment of dynein proteins, and in mitotic checkpoint signaling.
Form	25 mM Tris-HCl, 100 mM glycine, pH 7.3, 10% glycerol
Molecular Mass	70 kDa
AASequence	MEADIITNLCRLKEAEEERLKAAQYGLQLVESQNELQNQLDKCRNEMMTMTESYE QEKYTLQREVELKSRMLELSCECEAIKQQQKMHEKLEEQLSRSHGQEVNELKTKI EKLKVELDEARLSEKQLKHQVDHQKELLSCKSEELRVMSEVQESMSSEMLALQIEL TEMESMKTTLKEEVNELQYRQEQLLELLITNLMRQVDRLKEEKEEREKEAVSYNALE KARVANQDLQVQLDQALQQALDPNSKGNLSLFAEVEDRRAAMERQLISMKVKYQSL KKQNVFNREQMQRMKLQIATLLQMKGSQTEFEQQRLLAMLEQKNGEIKHLLGEIR NLEKFKNLYDSMESKPSVDSGTLEDNTYYTDLLQMKLDNLNKEIESTKGELSIQRMK

Tel: 1-631-559-9269 1-516-512-3133

Email: info@creative-biomart.com Fax: 1-631-938-8127

45-1 Ramsey Road, Shirley, NY 11967, USA

ALFESQRALDIERKLFANERCLQLSESENMKLRAKLDLKLKYEPEETVEVPVLKKRR
 EVLPVDITTAKDACVNNSALGGEVYRLPPQKEETQSCPNLSLEDNNLQLEKSVSIHTP
 VVSLSPHKNLPVDMQLKKEKKCVKLGVPADAEALSERSGNTPNSPRLAAESKLQTE
 VKEGKETSSKLEKETCKKSHPIYVSSKSTPETQCPQQTRTRPLEQKLISEEDLAAND
 ILDYKDDDDKV

Purity > 80% as determined by SDS-PAGE and Coomassie blue staining

Notes For testing in cell culture applications, please filter before use. Note that you may experience some loss of protein during the filtration process.

Storage Store at -80 centigrade. Stable for 12 months from the date of receipt of the product under proper storage and handling conditions. Avoid repeated freeze-thaw cycles.

Concentration >0.05 µg/µL as determined by microplate BCA method

GENE INFORMATION

Gene Name [SPDL1 spindle apparatus coiled-coil protein 1 \[Homo sapiens \(human\) \]](#)

Official Symbol [SPDL1](#)

Synonyms SPDL1; spindle apparatus coiled-coil protein 1; CCDC99; protein Spindly; arsenite-related gene 1 protein; coiled-coil domain-containing protein 99; rhabdomyosarcoma antigen MU-RMS-40.4A; rhabdomyosarcoma antigen protein MU-RMS-40.4A

Gene ID [54908](#)

mRNA Refseq [NM_017785](#)

Protein Refseq [NP_060255](#)

 Tel: 1-631-559-9269 1-516-512-3133

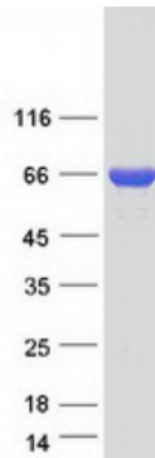
 Email: info@creative-biomart.com  Fax: 1-631-938-8127

 45-1 Ramsey Road, Shirley, NY 11967, USA

MIM 616401

UniProt ID Q96EA4

SDS-PAGE



 Tel: 1-631-559-9269 1-516-512-3133

 Email: info@creative-biomart.com  Fax: 1-631-938-8127

 45-1 Ramsey Road, Shirley, NY 11967, USA