

# Recombinant Full Length Human SPDL1 Protein, C-Flag-tagged

**Cat. No.** SPDL1-2106HFL    **Lot. No.** (See product label)

## SPECIFICATION

<b>Product Overview</b>	Recombinant Full Length Human SPDL1 Protein, fused to Flag-tag at C-terminus, was expressed in Mammalian cells.
<b>Species</b>	Human
<b>Source</b>	Mammalian Cells
<b>Description</b>	This gene encodes a coiled-coil domain-containing protein that functions in mitotic spindle formation and chromosome segregation. The encoded protein plays a role in coordinating microtubule attachment by promoting recruitment of dynein proteins, and in mitotic checkpoint signaling.
<b>Form</b>	25 mM Tris HCl, pH 7.3, 100 mM glycine, 10% glycerol.
<b>Molecular Mass</b>	70 kDa
<b>AA Sequence</b>	MEADIITNLCRLKEAEEERLKAAQYGLQLVESQNELQNQLDKCRNEMMTMTESYE QEKYTLQREVELKS RMLELSCECEAIKQQQKMHLEKLEEQLSRSHGQEVNELKTK IEKLVKVELDEARLSEKQLKHQVDHQKEL LSCKSEELRVMSERVQESMSSEMLALQIE LTEMESMKTTLKEEVNELQYRQEQLLELLITNLMRQVDRLKE EKEEREKEAVSYRNA LEKARVANQDLQVQLDQALQQALDPNSKGNLFAEVEDRRAAMERQLISMKVKYQ SLKKQNVFNREQMQRMKLQIATLLQMKGSQTEFEQQERLLAMLEQKNGEIKHLLGEI RNLEKFKNLYDSM ESKPSVDSGTLEDNTYYTDLLQMKLDNLNKEIESTKGELSIQRM KALFESQRALDIERKLFANERCLQLS ESENMKLRAKLDELKLYEPEETVEVPVLKK

 Tel: 1-631-559-9269    1-516-512-3133

 Email: [info@creative-biomart.com](mailto:info@creative-biomart.com)     Fax: 1-631-938-8127

 45-1 Ramsey Road, Shirley, NY 11967, USA

RREVLVPVDITTAKDACVNNNSALGGEVYRLPPQKEETQSC PNSLEDNNLQLEKSVSIH  
 TPVVSLSPHKNLPVDMQLKKEKKCVKLGVPADAEALSERSGNTPNPRLAA ESKL  
 QTEVKEGKETSSKLEKETCKKSHPILYVSSKSTPETQCPQQ TRTRPLEQKLISEEDL  
 AANDILDYKDDDDKV

**Purity** > 80% as determined by SDS-PAGE and Coomassie blue staining.

**Stability** Stable for 12 months from the date of receipt of the product under proper storage and handling conditions. Avoid repeated freeze-thaw cycles.

**Storage** Store at -80 centigrade.

**Concentration** >50 ug/mL as determined by microplate BCA method.

**Preparation** Recombinant protein was captured through anti-DDK affinity column followed by conventional chromatography steps.

**Full Length** Full L.

## GENE INFORMATION

**Gene Name** [SPDL1 spindle apparatus coiled-coil protein 1 \[ Homo sapiens \(human\) \]](#)

**Official Symbol** [SPDL1](#)

**Synonyms** [CCDC99](#)

**Gene ID** [54908](#)

**mRNA Refseq** [NM\\_017785.5](#)

 Tel: 1-631-559-9269 1-516-512-3133

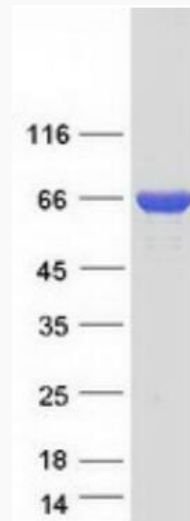
 Email: [info@creative-biomart.com](mailto:info@creative-biomart.com)  Fax: 1-631-938-8127

 45-1 Ramsey Road, Shirley, NY 11967, USA

**Protein Refseq** NP\_060255.3

**MIM** 616401

**UniProt ID** Q96EA4



Coomassie blue staining of purified SPDL1 protein.

 Tel: 1-631-559-9269 1-516-512-3133

 Email: [info@creative-biomart.com](mailto:info@creative-biomart.com)  Fax: 1-631-938-8127

 45-1 Ramsey Road, Shirley, NY 11967, USA