

Recombinant Human SPG21 protein, GST-tagged

Cat. No. SPG21-872H Lot. No. (See product label)

SPECIFICATION

Product Overview	Recombinant Human SPG21 protein(NP_057714.1) (Met 1-Gln 308) was expressed in Insect Cells with the GST tag at the N-terminus.
Species	Human
Source	Insect Cells
ProteinLength	1-308 aa
Form	Lyophilized from sterile 50mM Tris, 100mM NaCl, pH 8.0, 10% glycerol.
Molecular Mass	The recombinant human SPG21/GST chimera consists of 533 amino acids and predicts a molecular mass of 61 kDa which is also estimated by SDS-PAGE.
Endotoxin	< 1.0 EU per µg protein as determined by the LAL method.
Purity	> 90 % as determined by SDS-PAGE
Storage	Store it under sterile conditions at -20°C to -80°C upon receiving. Recommend to aliquot the protein into smaller quantities for optimal storage. Avoid repeated freeze-thaw cycles.
Reconstitution	It is recommended that sterile water be added to the vial to prepare a stock solution of 0.2 ug/ul. Centrifuge the vial at 4°C before opening to recover the entire contents.

 Tel: 1-631-559-9269 1-516-512-3133

 Email: info@creative-biomart.com  Fax: 1-631-938-8127

 45-1 Ramsey Road, Shirley, NY 11967, USA

GENE INFORMATION

Gene Name SPG21 spastic paraplegia 21 (autosomal recessive, Mast syndrome) [Homo sapiens]

Official Symbol SPG21

Synonyms SPG21; spastic paraplegia 21 (autosomal recessive, Mast syndrome); maspardin; ACP33; BM 019; GL010; MAST; acid cluster protein 33; spastic paraplegia 21 protein; spastic paraplegia 21 autosomal recessive Mast syndrome protein; BM-019; MASPARDIN;

Gene ID 51324

mRNA Refseq NM_001127889

Protein Refseq NP_001121361

MIM 608181

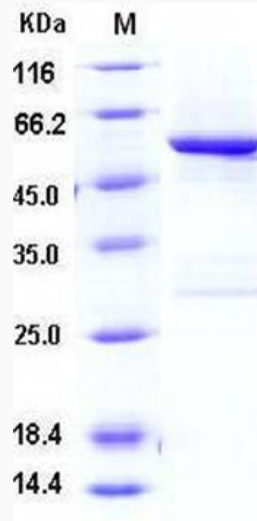
UniProt ID Q9NZD8

 Tel: 1-631-559-9269 1-516-512-3133

 Email: info@creative-biomart.com  Fax: 1-631-938-8127

 45-1 Ramsey Road, Shirley, NY 11967, USA

SDS-PAGE



 Tel: 1-631-559-9269 1-516-512-3133

 Email: info@creative-biomart.com  Fax: 1-631-938-8127

 45-1 Ramsey Road, Shirley, NY 11967, USA