

Recombinant Human SPHK1 Protein, His-tagged

Cat. No. SPHK1-012H Lot. No. (See product label)

SPECIFICATION

Product Overview Recombinant Human SPHK1 protein with a N-terminal His-tag was expressed in Insect Cell

Species Human

Source Insect Cells

Description The protein encoded by this gene catalyzes the phosphorylation of sphingosine to form sphingosine-1-phosphate (S1P), a lipid mediator with both intra- and extracellular functions. Intracellularly, S1P regulates proliferation and survival, and extracellularly, it is a ligand for cell surface G protein-coupled receptors. This protein, and its product S1P, play a key role in TNF-alpha signaling and the NF-kappa-B activation pathway important in inflammatory, antiapoptotic, and immune processes. Phosphorylation of this protein alters its catalytic activity and promotes its translocation to the plasma membrane. Alternative splicing results in multiple transcript variants encoding different isoforms.

Molecular Mass 47.5 kDa

Purity ≥80% estimated by SDS-PAGE

Unit Definition One unit is defined as the amount of enzyme required to produce 1 μmol of ADP per minute at 25 centigrade in 20 mM HEPES, pH 7.4, containing 50 mM sodium chloride, 10 mM magnesium chloride, 1 mM EGTA, and 0.02% Triton X-100.

 Tel: 1-631-559-9269 1-516-512-3133

 Email: info@creative-biomart.com  Fax: 1-631-938-8127

 45-1 Ramsey Road, Shirley, NY 11967, USA

Stability	≥ 1 year
Storage	-80 centigrade
Storage Buffer	25 mM HEPES, pH 8.0, with 150 mM sodium chloride, 3 mM DTT, 0.05% polysorbate 20, and 25% glycerol
Shipping	Dry ice in continental US, may vary elsewhere.

GENE INFORMATION

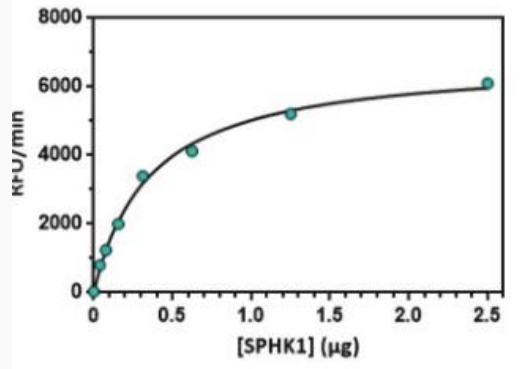
Gene Name	SPHK1 sphingosine kinase 1 [Homo sapiens (human)]
Official Symbol	SPHK1
Synonyms	SPHK1; sphingosine kinase 1; SPHK; phingosine kinase 1; SK 1; SPK 1; acetyltransferase SPHK1; EC 2.7.1.91
Gene ID	8877
mRNA Refseq	NM_001142601
Protein Refseq	NP_001136073
MIM	603730
UniProt ID	Q9NYA1

 Tel: 1-631-559-9269 1-516-512-3133

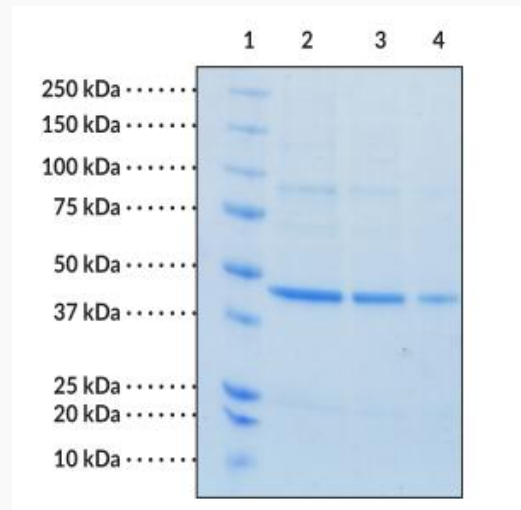
 Email: info@creative-biomart.com  Fax: 1-631-938-8127

 45-1 Ramsey Road, Shirley, NY 11967, USA

SPHK1 Activity Assay



SDS-PAGE analysis of SPHK1



Lane 1: MW Markers
 Lane 2: SPHK1 (4 g)
 Lane 3: SPHK1 (2 g)
 Lane 4: SPHK1 (1 g)

Tel: 1-631-559-9269 1-516-512-3133

Email: info@creative-biomart.com Fax: 1-631-938-8127

45-1 Ramsey Road, Shirley, NY 11967, USA