

Recombinant Human SPHK1 Protein, N-His-tagged

Cat. No. SPHK1-12H Lot. No. (See product label)

SPECIFICATION

Product Overview	Active recombinant human SPHK1 protein with N-terminal His-tag was expressed in Sf9 cells.
Species	Human
Source	Sf9 Cells
Description	<p>The protein encoded by this gene catalyzes the phosphorylation of sphingosine to form sphingosine-1-phosphate (S1P), a lipid mediator with both intra- and extracellular functions. Intracellularly, S1P regulates proliferation and survival, and extracellularly, it is a ligand for cell surface G protein-coupled receptors. This protein, and its product S1P, play a key role in TNF-alpha signaling and the NF-kappa-B activation pathway important in inflammatory, antiapoptotic, and immune processes. Phosphorylation of this protein alters its catalytic activity and promotes its translocation to the plasma membrane. Alternative splicing results in multiple transcript variants encoding different isoforms.</p>
Molecular Mass	47.5 kDa
Unit Definition	One unit is defined as the amount of enzyme required to produce 1 nmol of ADP per minute at 25 centigrade in 20 mM Hepes, pH, 7.4, containing 50 mM NaCl, 10 mM MgCl ₂ , 1 mM EGTA and 0.02% Triton X-100 and 50 μM Sphingosine (d18:1).
Stability	≥ 1 year

 Tel: 1-631-559-9269 1-516-512-3133

 Email: info@creative-biomart.com  Fax: 1-631-938-8127

 45-1 Ramsey Road, Shirley, NY 11967, USA

Storage	At -80 centigrade
Storage Buffer	25 mM HEPES, pH 8.0, with 150 mM sodium chloride, 3 mM DTT, 0.05% polysorbate 20, and 25% glycerol
Shipping	Dry ice in continental US; may vary elsewhere

GENE INFORMATION

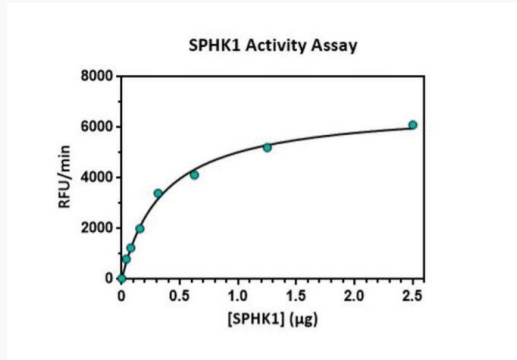
Gene Name	SPHK1 sphingosine kinase 1 [Homo sapiens (human)]
Official Symbol	SPHK1
Synonyms	SPHK1; sphingosine kinase 1; SPHK; sphingosine kinase 1; SK 1; SPK 1; acetyltransferase SPHK1; EC 2.7.1.91
Gene ID	8877
mRNA Refseq	NM_182965
Protein Refseq	NP_892010
MIM	603730
UniProt ID	Q9NYA1

 Tel: 1-631-559-9269 1-516-512-3133

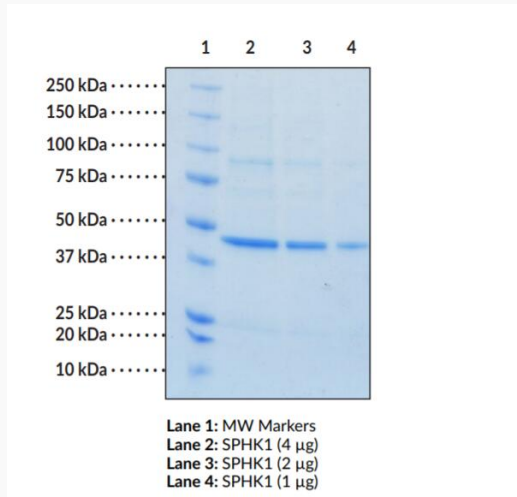
 Email: info@creative-biomart.com  Fax: 1-631-938-8127

 45-1 Ramsey Road, Shirley, NY 11967, USA

Activity



SDS-PAGE



 Tel: 1-631-559-9269 1-516-512-3133

 Email: info@creative-biomart.com  Fax: 1-631-938-8127

 45-1 Ramsey Road, Shirley, NY 11967, USA