

Recombinant Human SPHK2 Protein, His-tagged

Cat. No. SPHK2-01H Lot. No. (See product label)

SPECIFICATION

Product Overview	Recombinant human SPHK2 protein (2-654) with a N-terminal His-tag was expressed in insect cells.
Species	Human
Source	Insect Cells
ProteinLength	2-654
Description	This gene encodes one of two sphingosine kinase isozymes that catalyze the phosphorylation of sphingosine into sphingosine 1-phosphate. Sphingosine 1-phosphate mediates many cellular processes including migration, proliferation and apoptosis, and also plays a role in several types of cancer by promoting angiogenesis and tumorigenesis. The encoded protein may play a role in breast cancer proliferation and chemoresistance. Alternatively spliced transcript variants encoding multiple isoforms have been observed for this gene.
Form	25 mM HEPES, pH 8.0, with 150 mM sodium chloride, 3 mM DTT, 0.05% Triton X-100, and 5% glycerol
Molecular Mass	72.9 kDa
Purity	≥75% estimated by SDS-PAGE
Unit Definition	One unit is defined as the amount of enzyme required to produce 1 μmol of ADP per

 Tel: 1-631-559-9269 1-516-512-3133

 Email: info@creative-biomart.com  Fax: 1-631-938-8127

 45-1 Ramsey Road, Shirley, NY 11967, USA



minute at 25 centigrade in 20 mM HEPES, pH 7.4, containing 50 mM sodium chloride, 10 mM magnesium chloride, 1 mM EGTA, and 0.02% Triton X-100.

Applications WB, ELISA, Enzymatic Assay

Stability ≥ 1 year

Storage Store at -80 centigrade

GENE INFORMATION

Gene Name SPHK2 sphingosine kinase 2 [Homo sapiens (human)]

Official Symbol SPHK2

Synonyms SPHK2; sphingosine kinase 2; SK 2; SK-2; SPK 2; SPK-2; sphingosine kinase 2; sphingosine kinase type 2

Gene ID 56848

mRNA Refseq NM_001204158

Protein Refseq NP_001191087

MIM 607092

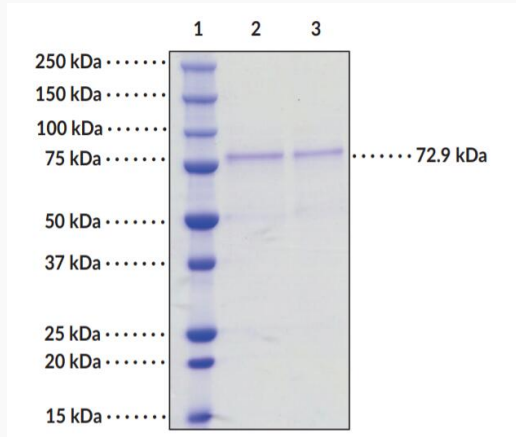
UniProt ID Q9NRA0

 Tel: 1-631-559-9269 1-516-512-3133

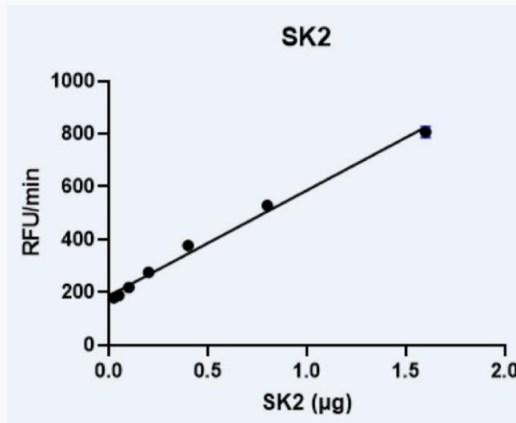
 Email: info@creative-biomart.com  Fax: 1-631-938-8127

 45-1 Ramsey Road, Shirley, NY 11967, USA

**SDS-PAGE Analysis
of SPHK2**



Lane 1: MW Markers, Lane 2: SPHK2 (4 g), Lane 3: SPHK2 (2 g). Representative gel image shown; actual purity may vary between each batch.



Tel: 1-631-559-9269 1-516-512-3133

Email: info@creative-biomart.com Fax: 1-631-938-8127

45-1 Ramsey Road, Shirley, NY 11967, USA