

## Recombinant Human SPHK2 protein, His & T7-tagged

Cat. No. SPHK2-1300H Lot. No. (See product label)

### SPECIFICATION

|                         |   |
|-------------------------|---|
| <b>Product Overview</b> | Recombinant Human SPHK2 aa. (Met1~Asn188 (Accession # Q9NRA0) fused with N-terminal His & T7 tag was produced in E. coli cells.   |
| <b>Species</b>          | Human   |
| <b>Source</b>           | E.coli  |
| <b>ProteinLength</b>    | Met1~Asn188   |
| <b>Description</b>      | This gene encodes one of two sphingosine kinase isozymes that catalyze the phosphorylation of sphingosine into sphingosine 1-phosphate. Sphingosine 1-phosphate mediates many cellular processes including migration, proliferation and apoptosis, and also plays a role in several types of cancer by promoting angiogenesis and tumorigenesis. The encoded protein may play a role in breast cancer proliferation and chemoresistance. Alternatively spliced transcript variants encoding multiple isoforms have been observed for this gene. |
| <b>Form</b>             | Freeze-dried powder   |
| <b>Molecular Mass</b>   | 22&27kDa as determined by SDS-PAGE reducing conditions.   |
| <b>Endotoxin</b>        | <1.0EU per 1g (determined by the LAL method)  |
| <b>Purity</b>           | >90%  |

 Tel: 1-631-559-9269 1-516-512-3133

 Email: [info@creative-biomart.com](mailto:info@creative-biomart.com)  Fax: 1-631-938-8127

 45-1 Ramsey Road, Shirley, NY 11967, USA

|                       |   |
|-----------------------|---|
| <b>Characteristic</b> | The isoelectric point is 10.1.  |
| <b>Applications</b>   | SDS-PAGE; WB; ELISA; IP.  |
| <b>Stability</b>      | The thermal stability is described by the loss rate of the target protein. The loss rate was determined by accelerated thermal degradation test, that is, incubate the protein at 37°C for 48h, and no obvious degradation and precipitation were observed. (Referring from China Biological Products Standard, which was calculated by the Arrhenius equation.) The loss of this protein is less than 5% within the expiration date under appropriate storage condition. |
| <b>Storage</b>        | Avoid repeated freeze/thaw cycles. Store at 2-8°C for one month. Aliquot and store at -80°C for 12 months.  |
| <b>Storage buffer</b> | Supplied as lyophilized form in 20mM Tris, 150mM NaCl, pH8.0, containing 1mM EDTA, 1mM DTT, 0.01% sarcosyl, 5% trehalose, and preservative.   |
| <b>Reconstitution</b> | Reconstitute in sterile ddH <sub>2</sub> O.   |

## GENE INFORMATION

|                        |  |
|------------------------|--|
| <b>Gene Name</b>       | SPHK2 sphingosine kinase 2 [ Homo sapiens (human) ]                              |
| <b>Official Symbol</b> | SPHK2  |
| <b>Synonyms</b>        | SPHK2; sphingosine kinase 2; SK 2; SK-2; SPK 2; SPK-2; sphingosine kinase type 2 |
| <b>Gene ID</b>         | 56848  |
| <b>mRNA Refseq</b>     | NM_001204158.2   |

 Tel: 1-631-559-9269 1-516-512-3133

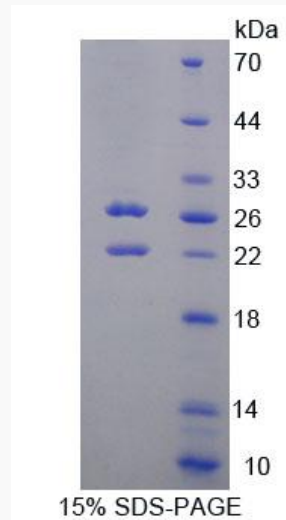
 Email: [info@creative-biomart.com](mailto:info@creative-biomart.com)  Fax: 1-631-938-8127

 45-1 Ramsey Road, Shirley, NY 11967, USA

**Protein Refseq** NP\_001191087.1

**UniProt ID** Q9NRA0

**SDS-PAGE**



 Tel: 1-631-559-9269 1-516-512-3133

 Email: [info@creative-biomart.com](mailto:info@creative-biomart.com)  Fax: 1-631-938-8127

 45-1 Ramsey Road, Shirley, NY 11967, USA