

# Recombinant Full Length Human SPHK2 Protein, C-Flag-tagged

**Cat. No.** SPHK2-1677HFL    **Lot. No.** (See product label)

## SPECIFICATION

<b>Product Overview</b>	Recombinant Full Length Human SPHK2 Protein, fused to Flag-tag at C-terminus, was expressed in Mammalian cells.
<b>Species</b>	Human
<b>Source</b>	Mammalian Cells
<b>Description</b>	This gene encodes one of two sphingosine kinase isozymes that catalyze the phosphorylation of sphingosine into sphingosine 1-phosphate. Sphingosine 1-phosphate mediates many cellular processes including migration, proliferation and apoptosis, and also plays a role in several types of cancer by promoting angiogenesis and tumorigenesis. The encoded protein may play a role in breast cancer proliferation and chemoresistance. Alternatively spliced transcript variants encoding multiple isoforms have been observed for this gene.
<b>Form</b>	25 mM Tris HCl, pH 7.3, 100 mM glycine, 10% glycerol.
<b>Molecular Mass</b>	69 kDa
<b>AA Sequence</b>	MNGHLEAEEQQDQRPDQELTGSWGHGPRSTLVRAKAMAPPPPLAASTPLLHGEF GYPARGPRFALTLT SQALHIQRLRPKPEARPRGGLVPLAEVSGCCTLRSRSPSDS AAYFCIYTYPRGRRGARRRATRTFRADGA ATYEENRAEAQRWATALTCLLRGLPLP GDGEITPDLLPRPPRLLLLVNPFGGRGLAWQWCKNHVLP MISE AGLSFNLIQTERQ NHARELVQGLSLSEWDGIVTVSGDGLLHEVLNGLLDRPDWEEAVKMPV GILPCGSG

 Tel: 1-631-559-9269    1-516-512-3133

 Email: [info@creative-biomart.com](mailto:info@creative-biomart.com)     Fax: 1-631-938-8127

 45-1 Ramsey Road, Shirley, NY 11967, USA

N ALAGAVNQHGGFEPALGLDLLLNCSSLLLCRGGGHPLDLLSVTLASGSRCSFSLSV  
 AWGFVSDVDIQSERF RALGSARFTLGTVLGLATLHTYRGRLSYLPATVEPASPTPA  
 HSLPRAKSELTLTPDPAPPMMAHSPLHRVS SDLPLPLPQPALASPGSPEPLPILSLNG  
 GGPELAGDWGGAGDAPLSPDPLLSSPPGSPKAALHSPVSEGA PVIPPSSGLPLPTP  
 DARVGASTCGPPDHLPLPLGTPLPPDWVTLEGDFVLMLAISPSHLGADLVAAPHAR  
 FDDGLVHLCWVRSGISRAALLRLFLAMERGSHFSLGCPQLGYAAARAFRLEPLTPR  
 GVLTVDGEQVEYGP  
 LQAQMHPGIGTLLTGPPGCPGREPTRTRPLEQKLISEEDLAANDILDYKDDDDKV

<b>Purity</b>	> 80% as determined by SDS-PAGE and Coomassie blue staining.
<b>Stability</b>	Stable for 12 months from the date of receipt of the product under proper storage and handling conditions. Avoid repeated freeze-thaw cycles.
<b>Storage</b>	Store at -80 centigrade.
<b>Concentration</b>	>50 ug/mL as determined by microplate BCA method.
<b>Preparation</b>	Recombinant protein was captured through anti-DDK affinity column followed by conventional chromatography steps.
<b>Protein Families</b>	Druggable Genome
<b>Protein Pathways</b>	Calcium signaling pathway, Fc gamma R-mediated phagocytosis, Metabolic pathways, Sphingolipid metabolism, VEGF signaling pathway
<b>Full Length</b>	Full L.

## GENE INFORMATION

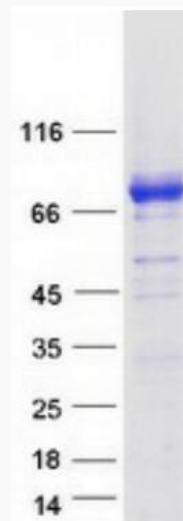
**Gene Name** [SPHK2 sphingosine kinase 2 \[ Homo sapiens \(human\) \]](#)

 Tel: 1-631-559-9269 1-516-512-3133

 Email: [info@creative-biomart.com](mailto:info@creative-biomart.com)  Fax: 1-631-938-8127

 45-1 Ramsey Road, Shirley, NY 11967, USA

<b>Official Symbol</b>	SPHK2
<b>Synonyms</b>	SK 2; SK-2; SPK 2; SPK-2
<b>Gene ID</b>	56848
<b>mRNA Refseq</b>	NM_020126.5
<b>Protein Refseq</b>	NP_064511.2
<b>MIM</b>	607092
<b>UniProt ID</b>	Q9NRA0



Coomassie blue staining of purified SPHK2 protein.

 Tel: 1-631-559-9269 1-516-512-3133

 Email: [info@creative-biomart.com](mailto:info@creative-biomart.com)  Fax: 1-631-938-8127

 45-1 Ramsey Road, Shirley, NY 11967, USA