

Active Recombinant Human SPHK2 protein, GST-tagged

Cat. No. SPHK2-175H Lot. No. (See product label)

SPECIFICATION

Product Overview	Recombinant Human SPHK2 fused with an N-terminal GST tag was expressed in Insect cells.
Species	Human
Source	Insect Cells
Description	<p>SPHK2 is a member of the SPHK family and catalyzes the phosphorylation of the lipid sphingosine, creating the bioactive lipid sphingosine-1-phosphate (S1P). Sphingolipid metabolism regulates proper uterine decidualization and blood vessel stability.</p> <p>SPHK2 is involved in the regulation of chemosensitivity by controlling ceramide formation and the downstream Akt pathway in human colon cancer cells. SPHK2 plays an important role in migration of MDA-MB-453 cells toward the ligand EGF. The N-terminal-extended form of SPHK2 has a role in serum-dependent regulation of cell proliferation and apoptosis.</p>
Form	50mM Tris-HCl, pH 7.5, 150mM NaCl, 10mM glutathione, 0.1mM EDTA, 0.25mM DTT, 0.1mM PMSF, 25% glycerol.
Bio-activity	155 nmol/min/mg
Molecular Mass	~110 kDa
Purity	>90%

 Tel: 1-631-559-9269 1-516-512-3133

 Email: info@creative-biomart.com  Fax: 1-631-938-8127

 45-1 Ramsey Road, Shirley, NY 11967, USA

Applications	Kinase Assay
Stability	1 year at -70 centigrade from the date of shipment
Storage	Store product at -70 centigrade. For optimal storage, aliquot target into smaller quantities after centrifugation and store at recommended temperature. For most favorable performance, avoid repeated handling and multiple freeze/thaw cycles.
Concentration	0.1 µg/µl
GENE INFORMATION	
Gene Name	SPHK2 sphingosine kinase 2 [Homo sapiens]
Official Symbol	SPHK2
Synonyms	SPHK2; sphingosine kinase 2; sphingosine kinase type 2; SK 2; SK-2; SPK 2; SPK-2;
Gene ID	56848
mRNA Refseq	NM_020126
Protein Refseq	NP_064511
MIM	607092
UniProt ID	Q9NRA0
Chromosome Location	19q13.2
Pathway	Calcium signaling pathway, organism-specific biosystem; Calcium signaling pathway,

 Tel: 1-631-559-9269 1-516-512-3133

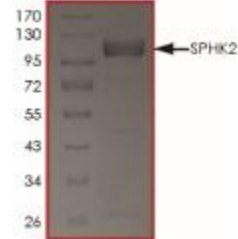
 Email: info@creative-biomart.com  Fax: 1-631-938-8127

 45-1 Ramsey Road, Shirley, NY 11967, USA

conserved biosystem; Ceramide signaling pathway, organism-specific biosystem; Fc gamma R-mediated phagocytosis, organism-specific biosystem; Fc gamma R-mediated phagocytosis, conserved biosystem; IL12-mediated signaling events, organism-specific biosystem; Metabolic pathways, organism-specific biosystem;

Function

ATP binding; D-erythro-sphingosine kinase activity; Ras GTPase binding; diacylglycerol kinase activity; nucleotide binding; protein binding; sphinganine kinase activity; transferase activity;



Tel: 1-631-559-9269 1-516-512-3133

Email: info@creative-biomart.com Fax: 1-631-938-8127

45-1 Ramsey Road, Shirley, NY 11967, USA