

## Recombinant Human SPIN4 protein(36-249aa), His-tagged

Cat. No. SPIN4-5374H Lot. No. (See product label)

### SPECIFICATION

<b>Product Overview</b>	Recombinant Human SPIN4 protein(Q56A73)(36-249aa), fused with N-terminal His tag, was expressed in E.coli.
<b>Species</b>	Human
<b>Source</b>	E.coli
<b>ProteinLength</b>	36-249aa
<b>Form</b>	If the delivery form is liquid, the default storage buffer is Tris/PBS-based buffer, 5%-50% glycerol. If the delivery form is lyophilized powder, the buffer before lyophilization is Tris/PBS-based buffer, 6% Trehalose, pH 8.0.
<b>Molecular Mass</b>	28.7 kDa
<b>Purity</b>	Greater than 85% as determined by SDS-PAGE.
<b>Storage</b>	Store at -20°C/-80°C upon receipt, aliquoting is necessary for mutiple use. Avoid repeated freeze-thaw cycles.
<b>Reconstitution</b>	We recommend that this vial be briefly centrifuged prior to opening to bring the contents to the bottom. Please reconstitute protein in deionized sterile water to a concentration of 0.1-1.0 mg/mL. We recommend to add 5-50% of glycerol (final concentration) and aliquot for long-term storage at -20°C/-80°C.

 Tel: 1-631-559-9269 1-516-512-3133

 Email: [info@creative-biomart.com](mailto:info@creative-biomart.com)  Fax: 1-631-938-8127

 45-1 Ramsey Road, Shirley, NY 11967, USA

**AA Sequence**

TRRNIVGCRIQHWKEGNEPVEQWKGTVLEQVSVKPTLYIIKYDGKDSVYGLELHR  
DKRVLALEILPERVPTPRIDSRLADSLIGKAVEHVFEGEHGTKDEWKGMVLARAPVM  
DTWFYITYEKDPVLYMYLLDDYKDGDLRIIPDSNYYFPTAEQEPGEVVDSL VGKQV  
EHAKDDGSKRTGIFIHQVVAKPSVYFIKFDDDIHIYVYGLVKTP

**GENE INFORMATION**

**Gene Name** SPIN4 spindlin family, member 4 [ Homo sapiens ]

**Official Symbol** SPIN4

**Synonyms** SPIN4

**Gene ID** 139886

**mRNA Refseq** NM\_001012968.2

**Protein Refseq** NP\_001012986.2

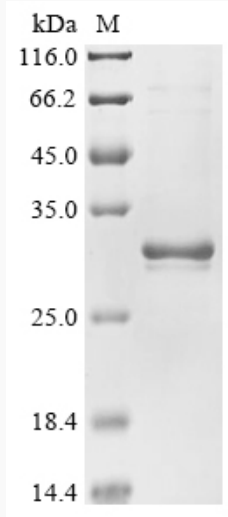
**UniProt ID** Q56A73

 Tel: 1-631-559-9269 1-516-512-3133

 Email: [info@creative-biomart.com](mailto:info@creative-biomart.com)  Fax: 1-631-938-8127

 45-1 Ramsey Road, Shirley, NY 11967, USA

**SDS-PAGE**



 Tel: 1-631-559-9269 1-516-512-3133

 Email: [info@creative-biomart.com](mailto:info@creative-biomart.com)  Fax: 1-631-938-8127

 45-1 Ramsey Road, Shirley, NY 11967, USA