

# Recombinant Full Length Human SPINT2 Protein, C-Flag-tagged

**Cat. No.** SPINT2-2061HFL    **Lot. No.** (See product label)

## SPECIFICATION

### Product Overview

Recombinant Full Length Human SPINT2 Protein, fused to Flag-tag at C-terminus, was expressed in Mammalian cells.

### Species

Human

### Source

Mammalian Cells

### Description

This gene encodes a transmembrane protein with two extracellular Kunitz domains that inhibits a variety of serine proteases. The protein inhibits HGF activator which prevents the formation of active hepatocyte growth factor. This gene is a putative tumor suppressor, and mutations in this gene result in congenital sodium diarrhea. Multiple transcript variants encoding different isoforms have been found for this gene.

### Form

25 mM Tris HCl, pH 7.3, 100 mM glycine, 10% glycerol.

### Molecular Mass

25.4 kDa

### AA Sequence

MAQLCGLRRSRAFLALLGSLLLSGVLAADRERSIHDFCLVSKVVGRCRASMPRWY  
 NVTDGSCQLFVYGG CDGNSNNYLTKEECLKKCATVTENATGDLATSRNAADSSVP  
 SAPRRQDSEDHSSDMFNYYEYCTANAVTG PCRASFPRWYFDVERNSCNNFIYGG  
 CRGNKNSYRSEEACMLRCFRQQENPPLPLGSKVVLLAGLFVMVLI LFLGASMVYLIR  
 VARRNQERALRTVWSSGDDKEQLVKNTYVL TRTRPLEQKLISEEDLAANDILDYKD  
 DDDKV

 Tel: 1-631-559-9269    1-516-512-3133

 Email: [info@creative-biomart.com](mailto:info@creative-biomart.com)     Fax: 1-631-938-8127

 45-1 Ramsey Road, Shirley, NY 11967, USA

|                         |   |
|-------------------------|---|
| <b>Purity</b>           | > 80% as determined by SDS-PAGE and Coomassie blue staining.  |
| <b>Stability</b>        | Stable for 12 months from the date of receipt of the product under proper storage and handling conditions. Avoid repeated freeze-thaw cycles. |
| <b>Storage</b>          | Store at -80 centigrade.  |
| <b>Concentration</b>    | >50 ug/mL as determined by microplate BCA method.   |
| <b>Preparation</b>      | Recombinant protein was captured through anti-DDK affinity column followed by conventional chromatography steps.                              |
| <b>Protein Families</b> | Transmembrane   |
| <b>Full Length</b>      | Full L.   |

## GENE INFORMATION

|                        |   |
|------------------------|---|
| <b>Gene Name</b>       | SPINT2 serine peptidase inhibitor, Kunitz type 2 [ Homo sapiens (human) ] |
| <b>Official Symbol</b> | SPINT2  |
| <b>Synonyms</b>        | PB; Kop; HAI2; DIAR3; HAI-2   |
| <b>Gene ID</b>         | 10653   |
| <b>mRNA Refseq</b>     | NM_021102.4   |
| <b>Protein Refseq</b>  | NP_066925.1   |
| <b>MIM</b>             | 605124  |

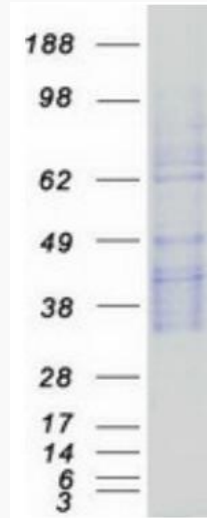
 Tel: 1-631-559-9269 1-516-512-3133

 Email: [info@creative-biomart.com](mailto:info@creative-biomart.com)  Fax: 1-631-938-8127

 45-1 Ramsey Road, Shirley, NY 11967, USA

UniProt ID

O43291



Coomassie blue staining of purified SPINT2 protein.

 Tel: 1-631-559-9269 1-516-512-3133

 Email: [info@creative-biomart.com](mailto:info@creative-biomart.com)  Fax: 1-631-938-8127

 45-1 Ramsey Road, Shirley, NY 11967, USA