

# Recombinant Full Length Human SPN Protein, C-Flag-tagged

Cat. No. SPN-1075HFL Lot. No. (See product label)

## SPECIFICATION

<b>Product Overview</b>	Recombinant Full Length Human SPN Protein, fused to Flag-tag at C-terminus, was expressed in Mammalian cells.
<b>Species</b>	Human
<b>Source</b>	Mammalian Cells
<b>Description</b>	This gene encodes a highly sialylated glycoprotein that functions in antigen-specific activation of T cells, and is found on the surface of thymocytes, T lymphocytes, monocytes, granulocytes, and some B lymphocytes. It contains a mucin-like extracellular domain, a transmembrane region and a carboxy-terminal intracellular region. The extracellular domain has a high proportion of serine and threonine residues, allowing extensive O-glycosylation, and has one potential N-glycosylation site, while the carboxy-terminal region has potential phosphorylation sites that may mediate transduction of activation signals. Different glycoforms of this protein have been described. In stimulated immune cells, proteolytic cleavage of the extracellular domain occurs in some cell types, releasing a soluble extracellular fragment. Defects in expression of this gene are associated with Wiskott-Aldrich syndrome.
<b>Form</b>	25 mM Tris HCl, pH 7.3, 100 mM glycine, 10% glycerol.
<b>Molecular Mass</b>	40.1 kDa
<b>AA Sequence</b>	MATLLLLLLGVLLVSPDALGSTTAVQTPTSGEPLVSTSEPLSSKMYTTSITSDPKADST GDQTSALPPSTS INEGSPLWTSIGASTGSPLPEPTYQEVSIMSSVPQETPHATSH

 Tel: 1-631-559-9269 1-516-512-3133

 Email: [info@creative-biomart.com](mailto:info@creative-biomart.com)  Fax: 1-631-938-8127

 45-1 Ramsey Road, Shirley, NY 11967, USA

PAVPITANSLGSHTVTGGTITTNSP ETSSRTSGAPVTTAASSLET SRGTSGPPLTMA  
 TVSLET SKGTSGPPVTMATDSLETSTGTTGPPVTMTTG SLEPSSGASGPQVSSVKL  
 STMMSPPTTSTNASTVPFRNPDENSRGMLPVAVLVALLAVIVLVALLLLWRRR QKRR  
 TGALVLSRGGKRNGVVDWAGPAQVPEEGAVTVTVGGSSGDKGSGFDPGEGSSR  
 RPTLTTFGRK  
 SRQGSLAMEELKSGSGPSLKGEELVASEDGAVDAPAPDEPEGGDGAAPTRTRP  
 LEQKLISEEDLAANDILDYKDDDDKV

**Purity** > 80% as determined by SDS-PAGE and Coomassie blue staining.

**Stability** Stable for 12 months from the date of receipt of the product under proper storage and handling conditions. Avoid repeated freeze-thaw cycles.

**Storage** Store at -80 centigrade.

**Concentration** >50 ug/mL as determined by microplate BCA method.

**Preparation** Recombinant protein was captured through anti-DDK affinity column followed by conventional chromatography steps.

**Protein Families** Druggable Genome, ES Cell Differentiation/IPS, Transmembrane

**Protein Pathways** Cell adhesion molecules (CAMs)

**Full Length** Full L.

## GENE INFORMATION

**Gene Name** SPN sialophorin [ [Homo sapiens \(human\)](#) ]

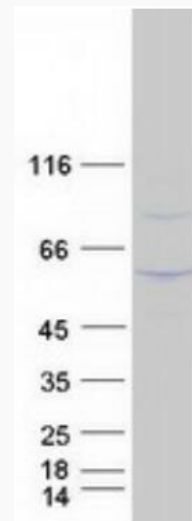
**Official Symbol** [SPN](#)

 Tel: 1-631-559-9269 1-516-512-3133

 Email: [info@creative-biomart.com](mailto:info@creative-biomart.com)  Fax: 1-631-938-8127

 45-1 Ramsey Road, Shirley, NY 11967, USA

<b>Synonyms</b>	LSN; CD43; GALGP; GPL115; LEU-22
<b>Gene ID</b>	6693
<b>mRNA Refseq</b>	NM_003123.6
<b>Protein Refseq</b>	NP_003114.1
<b>MIM</b>	182160
<b>UniProt ID</b>	P16150



Coomassie blue staining of purified SPN protein.

 Tel: 1-631-559-9269 1-516-512-3133

 Email: [info@creative-biomart.com](mailto:info@creative-biomart.com)  Fax: 1-631-938-8127

 45-1 Ramsey Road, Shirley, NY 11967, USA