

Recombinant Human SPN Protein, His-tagged

Cat. No. SPN-3246H **Lot. No.** (See product label)

SPECIFICATION

Product Overview	Recombinant Human SPN Protein is produced by E. coli expression system. This protein is fused with a His tag at the N-terminal.
Species	Human
Source	E.coli
ProteinLength	20-253 aa
Description	SPN is a major sialoglycoprotein found on the surface of thymocytes, T lymphocytes, monocytes, granulocytes, and some B lymphocytes. It may be part of a physiologic ligand-receptor complex involved in T-cell activation. During T-cell activation, this protein is actively removed from the T-cell-APC (antigen-presenting cell) contact site, suggesting a negative regulatory role in adaptive immune response. Recombinant human SPN protein, fused to His-tag at N-terminus, was expressed in E. coli and purified by using conventional chromatography techniques.
Form	Liquid. In 20mM Tris-HCl buffer (pH 8.0) containing 0.15M NaCl, 10% glycerol.
Molecular Mass	25.8 kDa
AA Sequence	MGSSHHHHHH SSGLVPRGSH MGSSTTAVQT PTSGEPLVST SEPLSSKMYT TSITSDPKAD STGDQTSALP PSTSINEGSP LWTSIGASTG SPLPEPTTYQ EVSIMSSVP QETPHATSHP AVPITANSLG SHTVTGGTIT TNSPETSRT SGAPVTTAAS SLETSRGTS

 Tel: 1-631-559-9269 1-516-512-3133

 Email: info@creative-biomart.com  Fax: 1-631-938-8127

 45-1 Ramsey Road, Shirley, NY 11967, USA

PPLTMATVSL ETSKGTSGPP VTMATDSLET STGTTGPPVT MTTGSLEPSS
GASGPQVSSV KLSTMMSPPT STNASTVPFR NPDENSR

Purity > 85% by SDS - PAGE

Notes For research use only. This product is not intended or approved for human, diagnostics or veterinary use.

Storage Can be stored at +2 centigrade to +8 centigrade for 1 week. For long term storage, aliquot and store at -20 centigrade to -80 centigrade. Avoid repeated freezing and thawing cycles.

Concentration 1 mg/ml (determined by Absorbance at 280nm)

GENE INFORMATION

Gene Name [SPN sialophorin \[Homo sapiens \]](#)

Official Symbol [SPN](#)

Synonyms SPN; sialophorin; leukosialin; CD43; GPL115; LSN; GALGP; galactoglycoprotein; leukocyte sialoglycoprotein;

Gene ID [6693](#)

mRNA Refseq [NM_001030288](#)

Protein Refseq [NP_001025459](#)

MIM [182160](#)

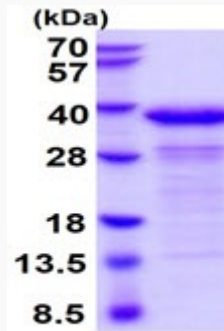
 Tel: 1-631-559-9269 1-516-512-3133

 Email: info@creative-biomart.com  Fax: 1-631-938-8127

 45-1 Ramsey Road, Shirley, NY 11967, USA

UniProt ID

P16150



3ug by SDS-PAGE under reducing condition and visualized by coomassie blue stain.

Tel: 1-631-559-9269 1-516-512-3133

Email: info@creative-biomart.com Fax: 1-631-938-8127

45-1 Ramsey Road, Shirley, NY 11967, USA