

# Recombinant Human SPNS1 Protein, Myc/DDK-tagged, C13 and N15-labeled

Cat. No. SPNS1-3436H Lot. No. (See product label)

## SPECIFICATION

<b>Product Overview</b>	SPNS1 MS Standard C13 and N15-labeled recombinant protein (NP_001135920) with a C-terminal MYC/DDK tag, was expressed in HEK293 cells.
<b>Species</b>	Human
<b>Source</b>	HEK293
<b>Description</b>	Sphingolipid transporter. May be involved in necrotic or autophagic cell death.
<b>Molecular Mass</b>	56.6 kDa
<b>AA Sequence</b>	<p>MAGSDTAPFLSQADDPDDGPVPGTGPLPGSTGNPKSEEPEVPDQEGLRITGLSP            GRSALIVAVLCYINLLNYMDRFTVAGVLPDIEQFFNIGDSSSGLIQTVFISSYMVLAPVF            GYLGDRYNRKYLMCGGIAFWSLVTLGSSFIPGEHFWLLLLTRGLVGVGEASYSTIAP            TLIADLFVADQRSRMLSIFYFAIPVGSGGLGYIAGSKVKDMAGDWHWALRVTPGLGVV            AVLLLFLVVREPPRGAVERHSDLPLNPTSWWADLRALARNPSFVLSLGLFTAVAFV            TGSLALWAPAFLLRSRVVLGETPPCLPGDSCSSSDSLIFGLITCLTGVLVGVLGVEIS            RRLRHSNPRADPLVCATGLLGSAPFLFSLACARGSIVATYIFIFIGETLLSMNWAIVA            DILLYVVIPTRRSTAEAFQIVLSHLLGDAGSPYLIGLISDRLRRNWPPSFLSEFRALQF            SLMLCAFVGGALGGAFLGTAIFIEADRRRAQLHVQGLLHEAGSTDDRIVVPQRGRST            RVPVASVLITRTRPLEQKLISEEDLAANDILDYKDDDDKV</p>
<b>Purity</b>	> 80% as determined by SDS-PAGE and Coomassie blue staining

 Tel: 1-631-559-9269 1-516-512-3133

 Email: [info@creative-biomart.com](mailto:info@creative-biomart.com)  Fax: 1-631-938-8127

 45-1 Ramsey Road, Shirley, NY 11967, USA

<b>Stability</b>	Stable for 3 months from receipt of products under proper storage and handling conditions.
<b>Storage</b>	Store at -80 centigrade. Avoid repeated freeze-thaw cycles.
<b>Concentration</b>	50 µg/mL as determined by BCA
<b>Storage Buffer</b>	100 mM glycine, 25 mM Tris-HCl, pH 7.3.

## GENE INFORMATION

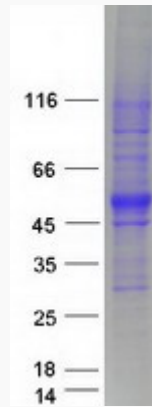
<b>Gene Name</b>	SPNS1 sphingolipid transporter 1 (putative) [ Homo sapiens (human) ]
<b>Official Symbol</b>	SPNS1
<b>Synonyms</b>	SPNS1; sphingolipid transporter 1 (putative); LAT; nrs; SPIN1; SPINL; HSpin1; PP2030; SLC62A1; SLC63A1; protein spinster homolog 1; SPNS sphingolipid transporter 1 (putative); spinster homolog 1; spinster-like protein 1
<b>Gene ID</b>	83985
<b>mRNA Refseq</b>	NM_001142448
<b>Protein Refseq</b>	NP_001135920
<b>MIM</b>	612583
<b>UniProt ID</b>	Q9H2V7

 Tel: 1-631-559-9269 1-516-512-3133

 Email: [info@creative-biomart.com](mailto:info@creative-biomart.com)  Fax: 1-631-938-8127

 45-1 Ramsey Road, Shirley, NY 11967, USA

**SDS-PAGE**



 Tel: 1-631-559-9269 1-516-512-3133

 Email: [info@creative-biomart.com](mailto:info@creative-biomart.com)  Fax: 1-631-938-8127

 45-1 Ramsey Road, Shirley, NY 11967, USA