

Recombinant Human SPNS1 Protein, Myc/DDK-tagged, C13 and N15-labeled

Cat. No. SPNS1-5137H Lot. No. (See product label)

SPECIFICATION

Product Overview	SPNS1 MS Standard C13 and N15-labeled recombinant protein (NP_114427) with a C-terminal MYC/DDK tag, was expressed in HEK293 cells.
Species	Human
Source	HEK293
Description	SPNS1 (Sphingolipid Transporter 1 (Putative)) is a Protein Coding gene. Diseases associated with SPNS1 include Amelogenesis Imperfecta, Type Ig and 46,Xy Sex Reversal 2. Gene Ontology (GO) annotations related to this gene include transporter activity and sphingolipid transporter activity. An important paralog of this gene is SPNS2.
Molecular Mass	56.6 kDa
AA Sequence	MAGSDTAPFLSQADDPDDGPVPGTGPLPGSTGNPKSEEPEVDPQEGLRITGLSP GRSALIVAVLCYINLLNYMDRFTVAGVLPDIEQFFNIGDSSSGLIQTVFISSYMVLAPVF GYLGDRYNRKYLMCGGIAFWSLVTLGSSFIPGEHFWLLLLTRGLVGVGEASYSTIAP TLIADLFVADQRSRMLSIFYFAIPVGSGGLGYIAGSKVKDMAGDWHWALRVTPGLGVV AVLLLFLVVREPPRGAVERHSDLPLNPTSWWADLRALARNPSFVLSLGLFTAVAFV TGSLALWAPAFLLRSRVVLGETPPCLPGDSCSSSDSLIFGLITCLTGVLGVGLGVEIS RRLRHSNPRADPLVCATGLLGSAPFLFSLACARGSIVATYIFIFIGETLLSMNWAIVA DILLYVVIPTRRSTAEAFQIVLSHLLGDAGSPYLIGLISDRLRRNWPPSFLSEFRALQF

 Tel: 1-631-559-9269 1-516-512-3133

 Email: info@creative-biomart.com  Fax: 1-631-938-8127

 45-1 Ramsey Road, Shirley, NY 11967, USA

SLMLCAFVFGALGGAAFLGTAIFIEADRRRAQLHVQGLLHEAGSTDDRIVVPQRGRST
RVPVASVLITRTRPLEQKLISEEDLAANDILDYKDDDDKV

Purity > 80% as determined by SDS-PAGE and Coomassie blue staining

Stability Stable for 3 months from receipt of products under proper storage and handling conditions.

Storage Store at -80 centigrade. Avoid repeated freeze-thaw cycles.

Concentration 50 µg/mL as determined by BCA

Storage Buffer 100 mM glycine, 25 mM Tris-HCl, pH 7.3.

GENE INFORMATION

Gene Name SPNS1 sphingolipid transporter 1 (putative) [Homo sapiens (human)]

Official Symbol SPNS1

Synonyms SPNS1; sphingolipid transporter 1 (putative); LAT; nrs; SPIN1; SPINL; HSpin1; PP2030; SLC62A1; SLC63A1; protein spinster homolog 1; SPNS sphingolipid transporter 1 (putative); spinster homolog 1; spinster-like protein 1

Gene ID 83985

mRNA Refseq NM_032038

Protein Refseq NP_114427

MIM 612583

 Tel: 1-631-559-9269 1-516-512-3133

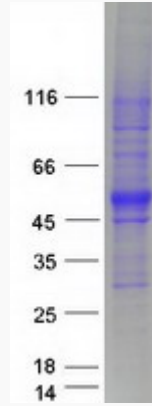
 Email: info@creative-biomart.com  Fax: 1-631-938-8127

 45-1 Ramsey Road, Shirley, NY 11967, USA

UniProt ID

Q9H2V7

SDS-PAGE



 Tel: 1-631-559-9269 1-516-512-3133

 Email: info@creative-biomart.com  Fax: 1-631-938-8127

 45-1 Ramsey Road, Shirley, NY 11967, USA