

Recombinant Human SPOCK1 protein, His-tagged

Cat. No. SPOCK1-545H Lot. No. (See product label)

SPECIFICATION

Product Overview	Recombinant Human SPOCK1 protein(Q08629)(Met 1-Trp439) was expressed in Insect Cells with a C-terminal polyhistidine tag.
Species	Human
Source	Insect Cells
ProteinLength	1-439 aa
Form	Lyophilized from sterile 20mM Tris, 500mM NaCl, 10% glycerol, pH 7.4.
Molecular Mass	The secreted recombinant human SPOCK1 consists of 428 amino acids and predicts a molecular mass of 48.4 KDa. The apparent molecular mass of the protein is approximately 53 KDa in SDS-PAGE under reducing conditions due to glycosylation.
Endotoxin	< 1.0 EU per µg of the protein as determined by the LAL method.
Purity	> 85 % as determined by SDS-PAGE
Storage	Store it under sterile conditions at -20°C to -80°C upon receiving. Recommend to aliquot the protein into smaller quantities for optimal storage. Avoid repeated freeze-thaw cycles.
Reconstitution	It is recommended that sterile water be added to the vial to prepare a stock solution of 0.2 ug/ul. Centrifuge the vial at 4°C before opening to recover the entire contents.

 Tel: 1-631-559-9269 1-516-512-3133

 Email: info@creative-biomart.com  Fax: 1-631-938-8127

 45-1 Ramsey Road, Shirley, NY 11967, USA

GENE INFORMATION

Gene Name SPOCK1 sparc/osteonectin, cwcv and kazal-like domains proteoglycan (testican) 1 [Homo sapiens]

Official Symbol SPOCK1

Synonyms SPOCK1; sparc/osteonectin, cwcv and kazal-like domains proteoglycan (testican) 1; sparc/osteonectin, cwcv and kazal like domains proteoglycan (testican) , SPOCK, TIC1; testican-1; testican 1; TIC1; SPOCK; TESTICAN; FLJ37170;

Gene ID 6695

mRNA Refseq NM_004598

Protein Refseq NP_004589

MIM 602264

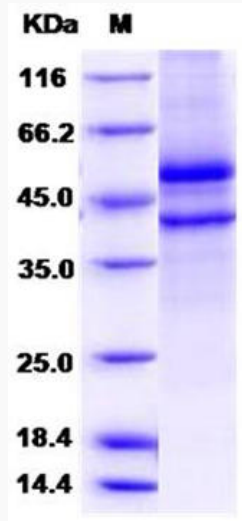
UniProt ID Q08629

 Tel: 1-631-559-9269 1-516-512-3133

 Email: info@creative-biomart.com  Fax: 1-631-938-8127

 45-1 Ramsey Road, Shirley, NY 11967, USA

SDS-PAGE



 Tel: 1-631-559-9269 1-516-512-3133

 Email: info@creative-biomart.com  Fax: 1-631-938-8127

 45-1 Ramsey Road, Shirley, NY 11967, USA