

Recombinant Human SPOCK2 Protein, Myc/DDK-tagged, C13 and N15-labeled

Cat. No. SPOCK2-5238H **Lot. No.** (See product label)

SPECIFICATION

Product Overview	SPOCK2 MS Standard C13 and N15-labeled recombinant protein (NP_055582) with a C-terminal MYC/DDK tag, was expressed in HEK293 cells.
Species	Human
Source	HEK293
Description	This gene encodes a protein which binds with glycosaminoglycans to form part of the extracellular matrix. The protein contains thyroglobulin type-1, follistatin-like, and calcium-binding domains, and has glycosaminoglycan attachment sites in the acidic C-terminal region. Three alternatively spliced transcript variants that encode different protein isoforms have been described for this gene.
Molecular Mass	46.8 kDa
AA Sequence	<p>MRAPGCGRLVLPLLLLAAAALAEGDAKGLKEGETPGNFMEDQWLSSISQYSGKIK HWNRFRDEVEDDYIKSWEDNQQGDEALDTTKDPCQKVKCSRHKVCIAQGYGRAM CISRKKLEHRIKQPTVKLHGNKDSICKPCHMAQLASVCGSDGHTYSSVCKLEQQACL SSKQLAVRCEGPCPCPTEQAATSTADGKPETCTGQDLADLGDRLRDWFQLLHENS KQNGSASSVAGPASGLDKSLGASCKDSIGWMFSKLDTSADLFLDQTELAAILNDKYE VCIRPFFNSCDTYKDGRVSTAIEWCFWFREKPPCLAELERIQIQEAAKKPGIFIPSC DEDGYRKMQCDQSSGDCWCVDQLGLELTGTRTHGSPDCDDIVGFSGDFGSGVG WEDEEEKETEEAGEEAEEMEEAGEEADDGGYIWTRTRPLEQKLISEEDLAANDILDY</p>

 Tel: 1-631-559-9269 1-516-512-3133

 Email: info@creative-biomart.com  Fax: 1-631-938-8127

 45-1 Ramsey Road, Shirley, NY 11967, USA

	KDDDDKV
Purity	> 80% as determined by SDS-PAGE and Coomassie blue staining
Stability	Stable for 3 months from receipt of products under proper storage and handling conditions.
Storage	Store at -80 centigrade. Avoid repeated freeze-thaw cycles.
Concentration	50 µg/mL as determined by BCA
Storage Buffer	100 mM glycine, 25 mM Tris-HCl, pH 7.3.
GENE INFORMATION	
Gene Name	SPOCK2 SPARC (osteonectin), cwcv and kazal like domains proteoglycan 2 [Homo sapiens (human)]
Official Symbol	SPOCK2
Synonyms	SPOCK2; sparc/osteonectin, cwcv and kazal-like domains proteoglycan (testican) 2; testican-2; KIAA0275; testican 2; SPARC/osteonectin, CWCV, and Kazal-like domains proteoglycan 2; FLJ97039;
Gene ID	9806
mRNA Refseq	NM_014767
Protein Refseq	NP_055582
MIM	607988

 Tel: 1-631-559-9269 1-516-512-3133

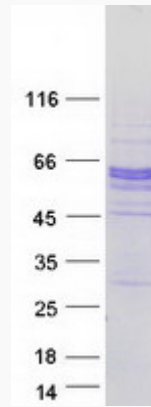
 Email: info@creative-biomart.com  Fax: 1-631-938-8127

 45-1 Ramsey Road, Shirley, NY 11967, USA

UniProt ID

Q92563

SDS-PAGE



 Tel: 1-631-559-9269 1-516-512-3133

 Email: info@creative-biomart.com  Fax: 1-631-938-8127

 45-1 Ramsey Road, Shirley, NY 11967, USA