

Recombinant Human SPON1 protein, His-tagged

Cat. No. SPON1-02H Lot. No. (See product label)

SPECIFICATION

Product Overview	Recombinant Human SPON1 protein, fused to His-tag, was expressed in HEK293.
Species	Human
Source	HEK293
ProteinLength	29-807aa
Description	<p>SPON1, also known as F-Spondin, is a member of a sub-group of TSR(thrombospondin) molecules. It is a cell adhesion protein that promotes the attachment of spinal cord and sensory neuron cells and the outgrowth of neurites in vitro. This protein may contribute to the growth and guidance of axons. SPON1 is also major factor for vascular smooth muscle cell. It shows highest expression in lung and lowest expression in pancreas, skeletal muscle and ovary. This protein binds to the central extracellular of APP and inhibits beta-secretase cleavage of APP.</p> <p>Recombinant human SPON1, fused to His-tag at C-terminus, was expressed in HEK293 cell and purified by using conventional chromatography techniques.</p>
Form	Liquid. In Phosphate-Buffered Saline (pH 7.4) containing 30% glycerol.
Molecular Mass	88.9 kDa
AA Sequence	<p>FSDETLDKVP KSEGYCSRIL RAQGTRREGY TEFSLRVEGD PDFYKPGTSY RVTLSAAPPS YFRGFTLIAL RENREGDKEE DHAGTFQIID EEETQFMSNC PVAVTESTPR RRTRIQVFWI APPAGTGCVI LKASIVQKRI IYFQDEGSLT</p>

 Tel: 1-631-559-9269 1-516-512-3133

 Email: info@creative-biomart.com  Fax: 1-631-938-8127

 45-1 Ramsey Road, Shirley, NY 11967, USA

KKLCEQDSTF DGVTDKPILD CCACGTAKYR LTFYGNWSEK THPKDYPRRA
 NHWSAIIGGS HSKNYVLWEY GGYASEGVKQ VAELGSPVKM EEEIRQQSDE
 VLTVIKAKAQ WPAWQPLNVR AAPSAEFSVD RTRHLMSFLT MMGPSPDWNV
 GLSAEDLCTK ECGWVQKVVQ DLIPWDAGTD SGVTYESPNK PTIPQEKIRP
 LTSLDHPQSP FYDPEGGSIT QVARVVIERI ARKGEQCNIV PDNVDDIVAD
 LAPEEKDEDD TPETCIYSNW SPWSACSSST CDKGRMRQR MLKAQLDLSV
 PCPDTQDFQP CMGPGCSDDED GSTCTMSEWI TWSPCSISCG MGMRSRERYV
 KQFPEDGSVC TLPTEETEK C TVNEECSPSS CLMTEWGEWD ECSATCGMGM
 KKRHRMIKMN PADGSMCKAE TSQAEKCMMP ECHTIPCLLS PWSEWSDCSV
 TCGKGMRTRQ RMLKSLAELG DCNEDLEQVE KCMLPECPID CELTEWSQWS
 ECNKSCGKGH VIRTRMIQME PQFGGAPCPE TVQRKKCRIR KCLRNPISIQK
 LRWREARES RSEQLKEESE GEQFPGCRM PWTAWSECTK LCGGGIQERY
 MTVKKRFKSS QFTSCKDKKE IRACNVHPC

Endotoxin < 1 EU per 1ug of protein (determined by LAL method).

Purity > 90%

Applications SDS-PAGE

Storage Can be stored at 2 centigrade to 8 centigrade for 1 week. For long term storage, aliquot and store at -20 centigrade to -80 centigrade. Avoid repeated freezing and thawing cycles.

Concentration 0.25 mg/ml

GENE INFORMATION

Gene Name SPON1 spondin 1 [Homo sapiens (human)]

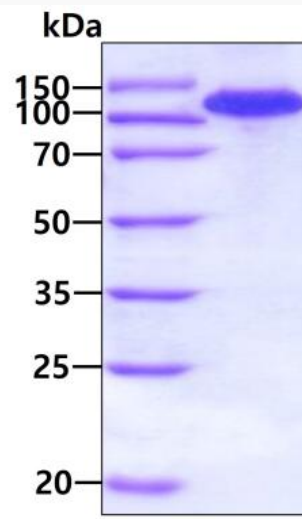
Official Symbol SPON1

 Tel: 1-631-559-9269 1-516-512-3133

 Email: info@creative-biomart.com  Fax: 1-631-938-8127

 45-1 Ramsey Road, Shirley, NY 11967, USA

Synonyms	f-spondin; VSGP/F-spondin; spondin-1; SPON1; vascular smooth muscle cell growth-promoting factor
Gene ID	10418
mRNA Refseq	NM_006108
Protein Refseq	NP_006099
MIM	604989
UniProt ID	Q9HCB6

SDS-PAGE

3ug by SDS-PAGE under reducing condition and visualized by coomassie blue stain.

 Tel: 1-631-559-9269 1-516-512-3133

 Email: info@creative-biomart.com  Fax: 1-631-938-8127

 45-1 Ramsey Road, Shirley, NY 11967, USA