

# Recombinant Human spondin 1, extracellular matrix protein Protein, His tagged

Cat. No. SPON1-057H Lot. No. (See product label)

## SPECIFICATION

<b>Product Overview</b>	Recombinant human Spondin-1/SPON1 protein (Q9HCB6) (Phe 29-Lys 434) with a His tag at the C-terminus was expressed in HEK293.
<b>Species</b>	Human
<b>Source</b>	HEK293
<b>ProteinLength</b>	29-434aa
<b>Description</b>	Predicted to be an extracellular matrix structural constituent. Predicted to be involved in cell adhesion. Predicted to act upstream of or within positive regulation of protein binding activity; positive regulation of protein processing; and regulation of amyloid precursor protein catabolic process. Located in extracellular space. Colocalizes with collagen-containing extracellular matrix.
<b>Tag</b>	C-His
<b>Molecular Mass</b>	47 kDa
<b>Endotoxin</b>	Less than 1.0 EU/μg by the LAL method.
<b>Purity</b>	>95% as determined by SDS-PAGE.
<b>Storage</b>	Please avoid repeated freeze-thaw cycles. Samples are stable for up to twelve

 Tel: 1-631-559-9269 1-516-512-3133

 Email: [info@creative-biomart.com](mailto:info@creative-biomart.com)  Fax: 1-631-938-8127

 45-1 Ramsey Road, Shirley, NY 11967, USA

months from date of receipt at -20 to -80 centigrade. It is recommended that aliquot the reconstituted solution to minimize freeze-thaw cycles.

**Storage Buffer**

Lyophilized from a 0.2 µm filtered solution of PBS, pH7.4, 5% Trehalose, 5% mannitol.

**Reconstitution**

Reconstitute at 250 µg/mL in sterile water.

## GENE INFORMATION

**Gene Name**

SPON1 spondin 1, extracellular matrix protein [ Homo sapiens (human) ]

**Official Symbol**

SPON1

**Synonyms**

SPON1; spondin 1, extracellular matrix protein; spondin 1, (f spondin) extracellular matrix protein; spondin-1; f spondin; KIAA0762; VSGP/F-spondin; spondin 1, (f-spondin) extracellular matrix protein; vascular smooth muscle cell growth-promoting factor; f-spondin; MGC10724;

**Gene ID**

10418

**mRNA Refseq**

NM\_006108

**Protein Refseq**

NP\_006099

**MIM**

604989

**UniProt ID**

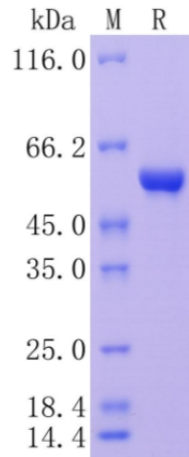
Q9HCB6

 Tel: 1-631-559-9269 1-516-512-3133

 Email: [info@creative-biomart.com](mailto:info@creative-biomart.com)  Fax: 1-631-938-8127

 45-1 Ramsey Road, Shirley, NY 11967, USA

**Protein on SDS-  
PAGE under  
reducing (R)  
condition.**



 Tel: 1-631-559-9269 1-516-512-3133

 Email: [info@creative-biomart.com](mailto:info@creative-biomart.com)  Fax: 1-631-938-8127

 45-1 Ramsey Road, Shirley, NY 11967, USA