

## Recombinant Human SPON1 Protein, His-tagged

Cat. No. SPON1-215H Lot. No. (See product label)

### SPECIFICATION

<b>Product Overview</b>	Recombinant Human SPON1(Ala597~Ala801) fused with His tag at N-terminal was expressed in E. coli.
<b>Species</b>	Human
<b>Source</b>	E.coli
<b>ProteinLength</b>	Ala597~Ala801
<b>Form</b>	PBS, pH7.4, containing 0.01% SKL, 1mM DTT, 5% Trehalose and Proclin300.
<b>Molecular Mass</b>	25.1kDa
<b>Endotoxin</b>	<1.0EU per 1g (determined by the LAL method)
<b>Purity</b>	> 98%
<b>Applications</b>	Positive Control; Immunogen; SDS-PAGE; WB. If bio-activity of the protein is needed, please check active protein.
<b>Stability</b>	The thermal stability is described by the loss rate. The loss rate was determined by accelerated thermal degradation test, that is, incubate the protein at 37 centigrade for 48h, and no obvious degradation and precipitation were observed. The loss rate is less than 5% within the expiration date under appropriate storage condition.

 Tel: 1-631-559-9269 1-516-512-3133

 Email: [info@creative-biomart.com](mailto:info@creative-biomart.com)  Fax: 1-631-938-8127

 45-1 Ramsey Road, Shirley, NY 11967, USA

**Storage** Avoid repeated freeze/thaw cycles. Store at 2-8 centigrade for one month. Aliquot and store at -80 centigrade for 12 months.

**Reconstitution** Reconstitute in PBS or others.

## GENE INFORMATION

**Gene Name** [SPON1 spondin 1, extracellular matrix protein \[ Homo sapiens \]](#)

**Official Symbol** [SPON1](#)

**Synonyms** SPON1; spondin 1, extracellular matrix protein; spondin 1, (f spondin) extracellular matrix protein; spondin-1; f spondin; KIAA0762; VSGP/F-spondin; spondin 1, (f-spondin) extracellular matrix protein; vascular smooth muscle cell growth-promoting factor; f-spondin; MGC10724;

**Gene ID** [10418](#)

**mRNA Refseq** [NM\\_006108](#)

**Protein Refseq** [NP\\_006099](#)

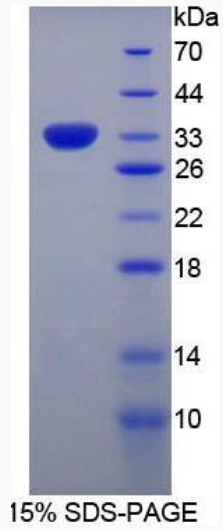
**MIM** [604989](#)

**UniProt ID** [Q9HCB6](#)

 Tel: 1-631-559-9269 1-516-512-3133

 Email: [info@creative-biomart.com](mailto:info@creative-biomart.com)  Fax: 1-631-938-8127

 45-1 Ramsey Road, Shirley, NY 11967, USA



 Tel: 1-631-559-9269 1-516-512-3133

 Email: [info@creative-biomart.com](mailto:info@creative-biomart.com)  Fax: 1-631-938-8127

 45-1 Ramsey Road, Shirley, NY 11967, USA