

Recombinant Human SPON2 Protein (Gln27-Val331), C-His tagged

Cat. No. SPON2-5537H Lot. No. (See product label)

SPECIFICATION

Product Overview	Recombinant human SPON2 (Gln27-Val331) fused with the C-terminal His tag was expressed in mammalian cells.
Species	Human
Source	Mammalian Cells
ProteinLength	Gln27-Val331
Form	Lyophilized powder/frozen liquid
Molecular Mass	33.55 kDa
Purity	> 90 % as determined by SDS-PAGE
Notes	For research use only.
Storage	Use a manual defrost freezer and avoid repeated freeze thaw cycles. Store at 2 to 8 centigrade for one week. Store at -20 to -80 centigrade for twelve months from the date of receipt.
Storage Buffer	Supplied as solution form in PBS or lyophilized from PBS.
Reconstitution	Reconstitute in sterile water for a stock solution.

 Tel: 1-631-559-9269 1-516-512-3133

 Email: info@creative-biomart.com  Fax: 1-631-938-8127

 45-1 Ramsey Road, Shirley, NY 11967, USA

Shipping They are shipped out with dry ice/blue ice unless customers require otherwise.

GENE INFORMATION

Gene Name SPON2 spondin 2, extracellular matrix protein [Homo sapiens (human)]

Official Symbol SPON2

Synonyms SPON2; spondin 2, extracellular matrix protein; spondin-2; DIL1; M spondin; Mindin; differentially expressed in cancerous and non-cancerous lung cells 1; DIL-1; MINDIN; M-SPONDIN; FLJ16313; FLJ22401; FLJ34460; DKFZp686G21139;

Gene ID 10417

mRNA Refseq NM_001128325

Protein Refseq NP_001121797

MIM 605918

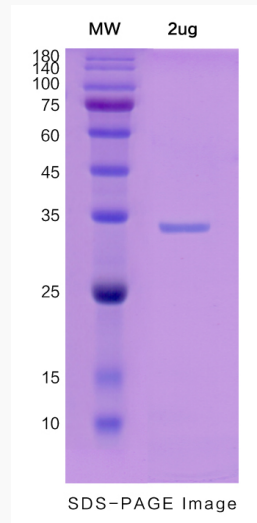
UniProt ID Q9BUD6

 Tel: 1-631-559-9269 1-516-512-3133

 Email: info@creative-biomart.com  Fax: 1-631-938-8127

 45-1 Ramsey Road, Shirley, NY 11967, USA

SDS-PAGE



 Tel: 1-631-559-9269 1-516-512-3133

 Email: info@creative-biomart.com  Fax: 1-631-938-8127

 45-1 Ramsey Road, Shirley, NY 11967, USA