

Recombinant Human SPP1 Protein, GST-tagged

Cat. No. SPP1-002H Lot. No. (See product label)

SPECIFICATION

Product Overview	Recombinant Human SPP1 Protein (59-300 aa (partial length)) with GST tag was expressed in E. coli.
Species	Human
Source	E.coli
ProteinLength	59-300
Description	The protein encoded by this gene is involved in the attachment of osteoclasts to the mineralized bone matrix. The encoded protein is secreted and binds hydroxyapatite with high affinity. The osteoclast vitronectin receptor is found in the cell membrane and may be involved in the binding to this protein. This protein is also a cytokine that upregulates expression of interferon-gamma and interleukin-12. Several transcript variants encoding different isoforms have been found for this gene.
Molecular Mass	55.8 kDa
Purity	>90% confirmed by 10% SDS-PAGE stained with Coomassie Blue (CB).
Applications	ELISA, Western Blot, Antibody Production, Protein array
Quality Control Test	10% SDS-PAGE stained with Coomassie Blue (CB) immunoblotting with anti-GST (WB) and peptide fingerprinting by MALDI-TOF mass spectrometry.

 Tel: 1-631-559-9269 1-516-512-3133

 Email: info@creative-biomart.com  Fax: 1-631-938-8127

 45-1 Ramsey Road, Shirley, NY 11967, USA

Storage	Prior to reconstitution, store the lyophilized protein at 2–8 centigrade. After reconstitution, store in working aliquots at –80 centigrade.
Expiry	All components are stable for 1 year of receipt, if stored properly.
Storage Buffer	Lyophilized from a solution of phosphate buffered saline (PBS), pH 7.4, containing 0.50 mg SPP1 per ml. No preservatives added.
Shipping	Lyophilized at Ambient temperature

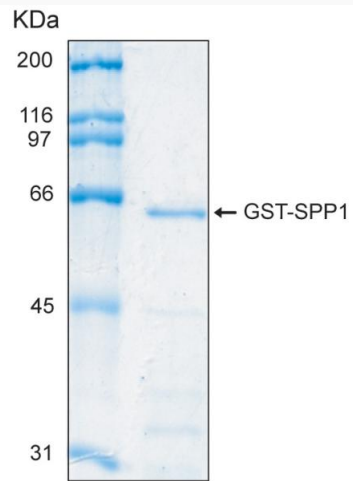
GENE INFORMATION

Gene Name	SPP1 secreted phosphoprotein 1 [Homo sapiens (human)]
Official Symbol	SPP1
Synonyms	SPP1; secreted phosphoprotein 1; OPN; BNSP; BSPI; ETA-1; osteopontin; PP1/CALPHA1 fusion; early T-lymphocyte activation 1; nephropontin; osteopontin/immunoglobulin alpha 1 heavy chain constant region fusion protein; secreted phosphoprotein 1 (osteopontin, bone sialoprotein I, early T-lymphocyte activation 1); secreted phosphoprotein 1 variant 6; urinary stone protein; uropontin
Gene ID	6696
mRNA Refseq	NM_000582
Protein Refseq	NP_000573
MIM	166490
UniProt ID	P10451

 Tel: 1-631-559-9269 1-516-512-3133

 Email: info@creative-biomart.com  Fax: 1-631-938-8127

 45-1 Ramsey Road, Shirley, NY 11967, USA



 Tel: 1-631-559-9269 1-516-512-3133

 Email: info@creative-biomart.com  Fax: 1-631-938-8127

 45-1 Ramsey Road, Shirley, NY 11967, USA