

Recombinant Human SPP1 protein(231-300 aa), C-His-tagged

Cat. No. SPP1-2628H Lot. No. (See product label)

SPECIFICATION

Product Overview	Recombinant Human SPP1 protein(P10451)(231-300 aa), fused with C-terminal His tag, was expressed in E. coli.
Species	Human
Source	E.coli
ProteinLength	231-300 aa
Form	0.15 M Phosphate buffered saline
Molecular Mass	11 kDa
Storage	Shipped on dry ice. Avoid repeated freeze-thaw cycles. Upon receipt, 2 days when stored at 2 to 8 °C after thawing. Up to 12 months when aliquoted and stored at -20 to -80°C.
Reconstitution	It is recommended that sterile water be added to the vial to prepare a stock solution of 0.2 ug/ul. Centrifuge the vial at 4°C before opening to recover the entire contents.
AA Sequence	DDQSAETHSHKQSRLYKRKANDESNEHSDVIDSQELSKVSREFHSHEFHSHEDMLV VDPKSKEEDKHLKF

GENE INFORMATION

 Tel: 1-631-559-9269 1-516-512-3133

 Email: info@creative-biomart.com  Fax: 1-631-938-8127

 45-1 Ramsey Road, Shirley, NY 11967, USA

Gene Name	SPP1 secreted phosphoprotein 1 [Homo sapiens]
Official Symbol	SPP1
Synonyms	SPP1; secreted phosphoprotein 1; BNSP, bone sialoprotein I , OPN, osteopontin; osteopontin; BSPI; early T lymphocyte activation 1; ETA 1; uropontin; nephropontin; osteopontin-C; osteopontin-D; SPP1/CALPHA1 fusion; bone sialoprotein 1; urinary stone protein; early T-lymphocyte activation 1; osteopontin/immunoglobulin alpha 1 heavy chain constant region fusion protein; secreted phosphoprotein 1 (osteopontin, bone sialoprotein I, early T-lymphocyte activation 1); OPN; BNSP; ETA-1; MGC110940;
Gene ID	6696
mRNA Refseq	NM_000582
Protein Refseq	NP_000573
MIM	166490
UniProt ID	P10451

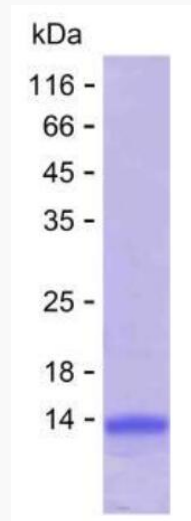
 Tel: 1-631-559-9269 1-516-512-3133

 Email: info@creative-biomart.com  Fax: 1-631-938-8127

 45-1 Ramsey Road, Shirley, NY 11967, USA



SDS-PAGE



Tel: 1-631-559-9269 1-516-512-3133

Email: info@creative-biomart.com Fax: 1-631-938-8127

45-1 Ramsey Road, Shirley, NY 11967, USA