

Recombinant Human SPP1 protein, His-tagged

Cat. No. SPP1-447H Lot. No. (See product label)

SPECIFICATION

Product Overview	Recombinant Human SPP1 (P10451) aa. (Ile17~Asn287) fused with His tag was produced in HEK293F cells.
Species	Human
Source	HEK293
ProteinLength	Ile17~Asn287
Description	The protein encoded by this gene is involved in the attachment of osteoclasts to the mineralized bone matrix. The encoded protein is secreted and binds hydroxyapatite with high affinity. The osteoclast vitronectin receptor is found in the cell membrane and may be involved in the binding to this protein. This protein is also a cytokine that upregulates expression of interferon-gamma and interleukin-12. Several transcript variants encoding different isoforms have been found for this gene.
Form	Freeze-dried powder
Molecular Mass	Predicted Molecular Mass: 32.2kDa; Accurate Molecular Mass: 60kDa as determined by SDS-PAGE reducing conditions.
Endotoxin	<1.0EU per 1ug (determined by the LAL method)
Purity	> 95%

 Tel: 1-631-559-9269 1-516-512-3133

 Email: info@creative-biomart.com  Fax: 1-631-938-8127

 45-1 Ramsey Road, Shirley, NY 11967, USA

Characteristic	Isoelectric point is 4.3.
Applications	SDS-PAGE; WB; ELISA; IP; CoIP; EMSA; Reporter Assays; Purification; Amine Reactive Labeling
Stability	The thermal stability is described by the loss rate. The loss rate was determined by accelerated thermal degradation test, that is, incubate the protein at 37°C for 48h, and no obvious degradation and precipitation were observed. The loss rate is less than 5% within the expiration date under appropriate storage condition.
Storage	Avoid repeated freeze/thaw cycles. Store at 2-8°C for one month. Aliquot and store at -80°C for 12 months.
Concentration	200ug/mL
Storage buffer	20mM Tris, 150mM NaCl, pH8.0, containing 1mM EDTA, 1mM DTT, 5% Trehalose and Proclin300.
Reconstitution	Reconstitute in 20mM Tris, 150mM NaCl (pH8.0) to a concentration of 0.1-1.0 mg/mL. Do not vortex

GENE INFORMATION

Gene Name	SPP1 secreted phosphoprotein 1 [Homo sapiens (human)]
Official Symbol	SPP1
Synonyms	SPP1; secreted phosphoprotein 1; OPN; BNSP; BSPI; ETA-1; osteopontin; SPP1/CALPHA1 fusion; early T-lymphocyte activation 1; nephropontin; osteopontin/immunoglobulin alpha 1 heavy chain constant region fusion protein; secreted phosphoprotein 1 (osteopontin, bone sialoprotein I, early T-lymphocyte

 Tel: 1-631-559-9269 1-516-512-3133

 Email: info@creative-biomart.com  Fax: 1-631-938-8127

 45-1 Ramsey Road, Shirley, NY 11967, USA

activation 1); secreted phosphoprotein 1 variant 6; urinary stone protein; uropontin

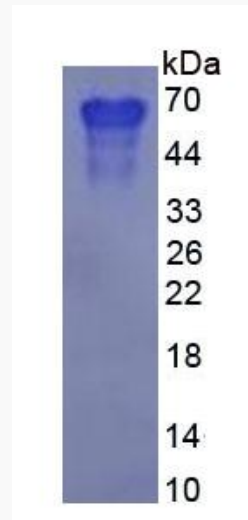
Gene ID 6696

mRNA Refseq NM_000582.2

Protein Refseq NP_000573.1

UniProt ID P10451

SDS-PAGE



Tel: 1-631-559-9269 1-516-512-3133

Email: info@creative-biomart.com Fax: 1-631-938-8127

45-1 Ramsey Road, Shirley, NY 11967, USA