

Recombinant Human SPP1 Protein (Ile17-Asn314), N-His tagged

Cat. No. SPP1-5118H Lot. No. (See product label)

SPECIFICATION

| | |
|-------------------------|---|
| Product Overview | Recombinant human OPN / SPP1 (Ile17-Asn314) fused with the N-His tag was expressed in E. coli. |
| Species | Human |
| Source | E.coli |
| ProteinLength | Ile17-Asn314 |
| Form | Lyophilized powder/frozen liquid |
| Molecular Mass | 36.02 kDa |
| Purity | >90% as determined by SDS-PAGE. |
| Notes | For research use only. |
| Storage | Use a manual defrost freezer and avoid repeated freeze thaw cycles. Store at 2 to 8 centigrade for one week. Store at -20 to -80 centigrade for twelve months from the date of receipt. |
| Storage Buffer | 0.01M PBS, pH 7.4, 0.02% NLS |
| Reconstitution | Reconstitute in sterile water for a stock solution. |

 Tel: 1-631-559-9269 1-516-512-3133

 Email: info@creative-biomart.com  Fax: 1-631-938-8127

 45-1 Ramsey Road, Shirley, NY 11967, USA

Shipping They are shipped out with dry ice/blue ice unless customers require otherwise.

GENE INFORMATION

Gene Name [SPP1 secreted phosphoprotein 1 \[Homo sapiens \(human\) \]](#)

Official Symbol [SPP1](#)

Synonyms

SPP1; secreted phosphoprotein 1; BNSP, bone sialoprotein I, OPN, osteopontin; osteopontin; BSPI; early T lymphocyte activation 1; ETA 1; uropontin; nephropontin; osteopontin-C; osteopontin-D; SPP1/CALPHA1 fusion; bone sialoprotein 1; urinary stone protein; early T-lymphocyte activation 1; osteopontin/immunoglobulin alpha 1 heavy chain constant region fusion protein; secreted phosphoprotein 1 (osteopontin, bone sialoprotein I, early T-lymphocyte activation 1); OPN; BNSP; ETA-1; MGC110940;

Gene ID [6696](#)

mRNA Refseq [NM_000582](#)

Protein Refseq [NP_000573](#)

MIM [166490](#)

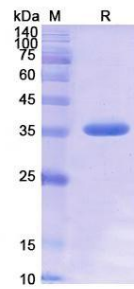
UniProt ID [P10451](#)

 Tel: 1-631-559-9269 1-516-512-3133

 Email: info@creative-biomart.com  Fax: 1-631-938-8127

 45-1 Ramsey Road, Shirley, NY 11967, USA

SDS-PAGE



 Tel: 1-631-559-9269 1-516-512-3133

 Email: info@creative-biomart.com  Fax: 1-631-938-8127

 45-1 Ramsey Road, Shirley, NY 11967, USA