

Recombinant Human SPP1 Protein, GST-tagged

Cat. No. SPP1-5246H Lot. No. (See product label)

SPECIFICATION

Product Overview	Recombinant human SPP1 protein (59-300 aa) was expressed in E. coli with GST-tag.
Species	Human
Source	E.coli
ProteinLength	59-300 a.a.
Form	Lyophilized from a solution of phosphate buffered saline (PBS), pH 7.4, containing 0.50 mg SPP1 per ml. No preservatives added
Molecular Mass	55.87 kDa
Purity	>90%
Applications	ELISA, WB, Antibody Production, Protein array
Storage	Lyophilized. Prior to reconstitution, store the lyophilized protein at 2-8 centigrade. After reconstitution, store in working aliquots at -80 centigrade.

GENE INFORMATION

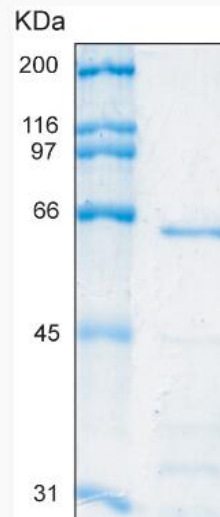
Gene Name SPP1 secreted phosphoprotein 1 [Homo sapiens]

 Tel: 1-631-559-9269 1-516-512-3133

 Email: info@creative-biomart.com  Fax: 1-631-938-8127

 45-1 Ramsey Road, Shirley, NY 11967, USA

Official Symbol	SPP1
Synonyms	SPP1 protein; Bone sialoprotein-1; Secreted phosphoprotein 1; SPP-1; Urinary stone protein; Nephropontin; Uropontin; Secreted phosphoprotein 1 isoform b; SPP1; Osteopontin; OPN; Early T lymphocyte activation 1; ETA1
Gene ID	6696
mRNA Refseq	NM_000582
Protein Refseq	NP_000573
MIM	166490
UniProt ID	P10451



 Tel: 1-631-559-9269 1-516-512-3133

 Email: info@creative-biomart.com  Fax: 1-631-938-8127

 45-1 Ramsey Road, Shirley, NY 11967, USA