

Recombinant Human SPP1 Protein, Myc/DDK-tagged, C13 and N15-labeled

Cat. No. SPP1-5435H **Lot. No.** (See product label)

SPECIFICATION

Product Overview

SPP1 MS Standard C13 and N15-labeled recombinant protein (NP_001035147) with a C-terminal MYC/DDK tag, was expressed in HEK293 cells.

Species

Human

Source

HEK293

Description

The protein encoded by this gene is involved in the attachment of osteoclasts to the mineralized bone matrix. The encoded protein is secreted and binds hydroxyapatite with high affinity. The osteoclast vitronectin receptor is found in the cell membrane and may be involved in the binding to this protein. This protein is also a cytokine that upregulates expression of interferon-gamma and interleukin-12. Several transcript variants encoding different isoforms have been found for this gene.

Molecular Mass

35.4 kDa

AA Sequence

MRIAVICFCLLGITCAIPVKQADSGSSEEKQLYNKYPDAVATWLNPDPSQKQNLAP
 QNAVSSEETNDFKQETLPSKSNESHDMDDMDEDDDDHVDSDQSDSNDSDDVD
 DTDDSHQSDESHHSDESDELVTDFPTDLPATEVFTPVVPTVDTYDGRGDSVVYGLR
 SKSKKFRPDIQYPDATDEEDITSHMESEELNGAYKAIPVAQDLNAPSDWDSRGKDS
 YETSQLDDQSAETHSHKQSRLYKRKANDESNEHSDVIDSQELSKVSREFHSHEFH
 HEDMLVVDPKSKEEDKHLKFRISHELDSASSEVNTRTRPLEQKLISEEDLAANDILDY
 KDDDDKV

 Tel: 1-631-559-9269 1-516-512-3133

 Email: info@creative-biomart.com  Fax: 1-631-938-8127

 45-1 Ramsey Road, Shirley, NY 11967, USA

Purity	> 80% as determined by SDS-PAGE and Coomassie blue staining
Stability	Stable for 3 months from receipt of products under proper storage and handling conditions.
Storage	Store at -80 centigrade. Avoid repeated freeze-thaw cycles.
Concentration	50 µg/mL as determined by BCA
Storage Buffer	100 mM glycine, 25 mM Tris-HCl, pH 7.3.

GENE INFORMATION

Gene Name	SPP1 secreted phosphoprotein 1 [Homo sapiens (human)]
Official Symbol	SPP1
Synonyms	SPP1; secreted phosphoprotein 1; BNSP, bone sialoprotein I, OPN, osteopontin; osteopontin; BSPI; early T lymphocyte activation 1; ETA 1; uropontin; nephropontin; osteopontin-C; osteopontin-D; SPP1/CALPHA1 fusion; bone sialoprotein 1; urinary stone protein; early T-lymphocyte activation 1; osteopontin/immunoglobulin alpha 1 heavy chain constant region fusion protein; secreted phosphoprotein 1 (osteopontin, bone sialoprotein I, early T-lymphocyte activation 1); OPN; BNSP; ETA-1; MGC110940;
Gene ID	6696
mRNA Refseq	NM_001040058
Protein Refseq	NP_001035147

 Tel: 1-631-559-9269 1-516-512-3133

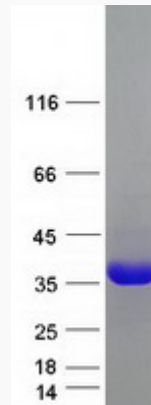
 Email: info@creative-biomart.com  Fax: 1-631-938-8127

 45-1 Ramsey Road, Shirley, NY 11967, USA

MIM 166490

UniProt ID P10451

SDS-PAGE



 Tel: 1-631-559-9269 1-516-512-3133

 Email: info@creative-biomart.com  Fax: 1-631-938-8127

 45-1 Ramsey Road, Shirley, NY 11967, USA