

Recombinant Human SPP1 protein, His-tagged

Cat. No. SPP1-5645H **Lot. No.** (See product label)

SPECIFICATION

Product Overview	Recombinant Human SPP1 protein(NP_000573.1)(Ile17-Asn300), fused with C-terminal His tag, was expressed in HEK293.
Species	Human
Source	HEK293
ProteinLength	Ile17-Asn300
Tag	C-His
Form	Supplied as 0.22µm filtered solution in PBS (pH 7.4).
Molecular Mass	The protein has a predicted MW of 34.8 kDa. Due to glycosylation, the protein migrates to 50-60 kDa based on Tris-Bis PAGE result.
Endotoxin	Less than 1EU per µg by the LAL method.
Purity	> 95% as determined by Tris-Bis PAGE;> 95% as determined by HPLC
Storage	Valid for 12 months from date of receipt when stored at -80°C. Recommend to aliquot the protein into smaller quantities for optimal storage. Please do not repeated freeze-thaw cycles.
Reconstitution	It is recommended that sterile water be added to the vial to prepare a stock solution of

 Tel: 1-631-559-9269 1-516-512-3133

 Email: info@creative-biomart.com  Fax: 1-631-938-8127

 45-1 Ramsey Road, Shirley, NY 11967, USA

0.2 ug/ul. Centrifuge the vial at 4°C before opening to recover the entire contents.

GENE INFORMATION

Gene Name [SPP1 secreted phosphoprotein 1 \[Homo sapiens \]](#)

Official Symbol [SPP1](#)

Synonyms

SPP1; secreted phosphoprotein 1; BNSP, bone sialoprotein I , OPN, osteopontin; osteopontin; BSPI; early T lymphocyte activation 1; ETA 1; uropontin; nephropontin; osteopontin-C; osteopontin-D; SPP1/CALPHA1 fusion; bone sialoprotein 1; urinary stone protein; early T-lymphocyte activation 1; osteopontin/immunoglobulin alpha 1 heavy chain constant region fusion protein; secreted phosphoprotein 1 (osteopontin, bone sialoprotein I, early T-lymphocyte activation 1); OPN; BNSP; ETA-1; MGC110940;

Gene ID [6696](#)

mRNA Refseq [NM_000582](#)

Protein Refseq [NP_000573](#)

MIM [166490](#)

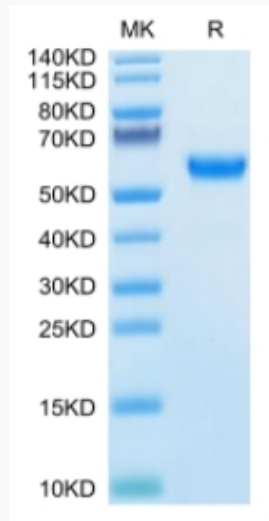
UniProt ID [P10451](#)

 Tel: 1-631-559-9269 1-516-512-3133

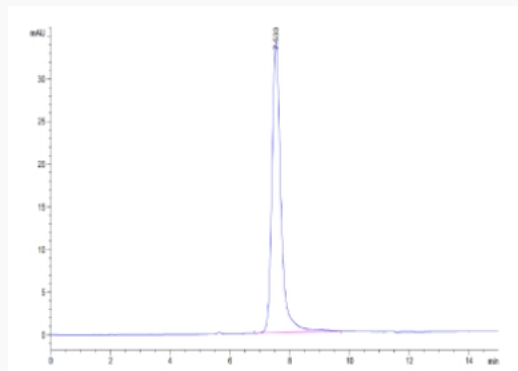
 Email: info@creative-biomart.com  Fax: 1-631-938-8127

 45-1 Ramsey Road, Shirley, NY 11967, USA

Tris-Bis PAGE



SEC-HPLC



 Tel: 1-631-559-9269 1-516-512-3133

 Email: info@creative-biomart.com  Fax: 1-631-938-8127

 45-1 Ramsey Road, Shirley, NY 11967, USA