

## Recombinant Human SPP1 Full Length protein, His-tagged

Cat. No. SPP1-664H Lot. No. (See product label)

### SPECIFICATION

<b>Product Overview</b>	Recombinant Human SPP1 protein(Met 1-Asn 314), fused with C-terminal His tag, was expressed in HEK293.
<b>Species</b>	Human
<b>Source</b>	HEK293
<b>ProteinLength</b>	Met 1-Asn 314
<b>Tag</b>	C-His
<b>Form</b>	Liquid in sterile PBS, pH7.4.
<b>Molecular Mass</b>	The protein has a calculated MW of 35 kDa.
<b>Endotoxin</b>	<1.0EU per 1µg (determined by the LAL method).
<b>Purity</b>	> 80 % as determined by SDS-PAGE.
<b>Storage</b>	Store it under sterile conditions at -80°C. It is recommended that the protein be aliquoted for optimal storage. Avoid repeated freeze-thaw cycles.
<b>Concentration</b>	1.0 mg/ml.
<b>Reconstitution</b>	Centrifuge the vial at 4°C before opening to recover the entire contents.

 Tel: 1-631-559-9269 1-516-512-3133

 Email: [info@creative-biomart.com](mailto:info@creative-biomart.com)  Fax: 1-631-938-8127

 45-1 Ramsey Road, Shirley, NY 11967, USA

**AA Sequence**

IPVKQADSGSSEEKQLYNKYPDAVATWLNPDPSQKQNLLAPQNAVSSSEETNDFKQE  
 TLPSKSNESHDMDDMDEDDDDHVDSDQSDSNDSDDDVDDTDDSHQSDESHHS  
 DESDELVTDFPTDLPATEVFTPVVPTVDTYDGRGDSVVYGLRSKSKKFRRPDIQYPD  
 ATDEDITSHMESEELNGAYKAIPVAQDLNAPSDWDSRGKDSYETSQLDDQSAETHS  
 HKQSRLYKRKANDESNEHSDVIDSQELSKVSREFHSHEFHSHEDMLVVDPKSKEED  
 KHLKFRISHELDSASSEVNAHHHHHHHHHHH

**GENE INFORMATION**

**Gene Name** [SPP1 secreted phosphoprotein 1 \[ Homo sapiens \]](#)

**Official Symbol** [SPP1](#)

**Synonyms**

SPP1; secreted phosphoprotein 1; BNSP, bone sialoprotein I , OPN, osteopontin; osteopontin; BSPI; early T lymphocyte activation 1; ETA 1; uropontin; nephropontin; osteopontin-C; osteopontin-D; SPP1/CALPHA1 fusion; bone sialoprotein 1; urinary stone protein; early T-lymphocyte activation 1; osteopontin/immunoglobulin alpha 1 heavy chain constant region fusion protein; secreted phosphoprotein 1 (osteopontin, bone sialoprotein I, early T-lymphocyte activation 1); OPN; BNSP; ETA-1; MGC110940;

**Gene ID** [6696](#)

**mRNA Refseq** [NM\\_000582](#)

**Protein Refseq** [NP\\_000573](#)

**MIM** [166490](#)

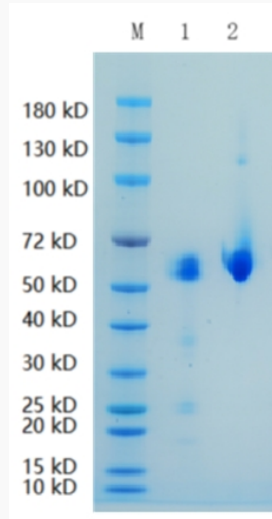
**UniProt ID** [P10451](#)

 Tel: 1-631-559-9269 1-516-512-3133

 Email: [info@creative-biomart.com](mailto:info@creative-biomart.com)  Fax: 1-631-938-8127

 45-1 Ramsey Road, Shirley, NY 11967, USA

**SDS-PAGE**



 Tel: 1-631-559-9269 1-516-512-3133

 Email: [info@creative-biomart.com](mailto:info@creative-biomart.com)  Fax: 1-631-938-8127

 45-1 Ramsey Road, Shirley, NY 11967, USA