

Recombinant Rhesus monkey SPP1 protein, His-tagged

Cat. No. SPP1-7902R Lot. No. (See product label)

SPECIFICATION

| | |
|-------------------------|---|
| Product Overview | Recombinant Rhesus monkey SPP1 aa. (Pro18~Asn314 (Accession # F6V2X3)) fused with N-terminal His tag was produced in E. coli cells. |
| Species | Rhesus macaque |
| Source | E.coli |
| ProteinLength | Pro18~Asn314 |
| Form | Freeze-dried powder |
| Molecular Mass | Predicted Molecular Mass: 34.8kDa |
| Endotoxin | <1.0EU per 1g (determined by the LAL method) |
| Purity | >95% |
| Characteristic | The isoelectric point is 4.6. |
| Applications | SDS-PAGE; WB; ELISA; IP |
| Stability | The thermal stability is described by the loss rate. The loss rate was determined by accelerated thermal degradation test, that is, incubate the protein at 37°C for 48h, and no obvious degradation and precipitation were observed. The loss rate is less than 5% within the expiration date under appropriate storage condition. |

 Tel: 1-631-559-9269 1-516-512-3133

 Email: info@creative-biomart.com  Fax: 1-631-938-8127

 45-1 Ramsey Road, Shirley, NY 11967, USA

| | |
|-----------------------|--|
| Storage | Avoid repeated freeze/thaw cycles. Store at 2-8°C for one month. Aliquot and store at -80°C for 12 months. |
| Storage buffer | Supplied as lyophilized form in PBS, pH7.4, containing 5% trehalose, 0.01% sarcosyl |
| Reconstitution | Reconstitute in sterile PBS, pH7.2-pH7.4. |

GENE INFORMATION

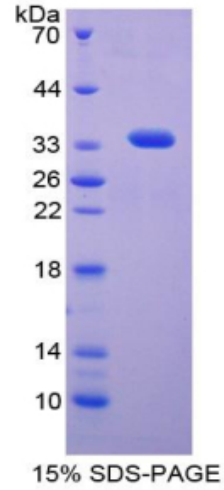
| | |
|------------------------|---|
| Gene Name | SPP1 secreted phosphoprotein 1 [<i>Macaca mulatta</i> (Rhesus monkey)] |
| Official Symbol | SPP1 |
| Synonyms | secreted phosphoprotein 1 (osteopontin, bone sialoprotein I, early T-lymphocyte activation 1); osteopontin; Bone sialoprotein 1 |
| Gene ID | 704930 |
| mRNA Refseq | NM_001261806.2 |
| Protein Refseq | NP_001248735.1 |
| UniProt ID | F6V2X3 |

 Tel: 1-631-559-9269 1-516-512-3133

 Email: info@creative-biomart.com  Fax: 1-631-938-8127

 45-1 Ramsey Road, Shirley, NY 11967, USA

SDS-PAGE



 Tel: 1-631-559-9269 1-516-512-3133

 Email: info@creative-biomart.com  Fax: 1-631-938-8127

 45-1 Ramsey Road, Shirley, NY 11967, USA