

Active Recombinant Full Length Human SPP1 Protein, C-Flag-tagged

Cat. No. SPP1-91HFL **Lot. No.** (See product label)

SPECIFICATION

Product Overview	Recombinant Full Length Human SPP1 Protein, fused to Flag-tag at C-terminus, was expressed in Mammalian cells.
Species	Human
Source	Mammalian Cells
Description	The protein encoded by this gene is involved in the attachment of osteoclasts to the mineralized bone matrix. The encoded protein is secreted and binds hydroxyapatite with high affinity. The osteoclast vitronectin receptor is found in the cell membrane and may be involved in the binding to this protein. This protein is also a cytokine that upregulates expression of interferon-gamma and interleukin-12. Several transcript variants encoding different isoforms have been found for this gene.
Form	25 mM Tris HCl, pH 7.3, 100 mM glycine, 10% glycerol.
Bio-activity	Cell treatment
Molecular Mass	33.7 kDa
AA Sequence	MRIAVICFLLGITCAIPVKQADSGSSEEKQLYNKYPDAVATWLNPDPSQKQNLLAP QNAVSSEETNDFK QETLPSKSNESHDMDDMDEDDDDHVDSQDSIDSNSDDV DDTDDSHQSDESHHSDESDELVTDFPTDL PATEVFTPVVPTVDTYDGRGDSVYVG LRSKSKKFRRPDIQYPDATDEEDITSHMESEELNGAYKAIPVAQD LNAPSDWDSRGK

 Tel: 1-631-559-9269 1-516-512-3133

 Email: info@creative-biomart.com  Fax: 1-631-938-8127

 45-1 Ramsey Road, Shirley, NY 11967, USA

DSYETSQLDDQSAETHSHKQSRLYKRKANDESNEHSDVIDSQELSKVSREFHSHEF
 HS
 HEDMLVVDPKSKEEDKHLKFRISHELDSASSEVNTRTRPLEQKLISEEDLAANDILDY
 KDDDDKV

Purity	> 80% as determined by SDS-PAGE and Coomassie blue staining.
Stability	Stable for 12 months from the date of receipt of the product under proper storage and handling conditions. Avoid repeated freeze-thaw cycles.
Storage	Store at -80 centigrade.
Concentration	>50 ug/mL as determined by microplate BCA method.
Preparation	Recombinant protein was captured through anti-DDK affinity column followed by conventional chromatography steps.
Protein Families	Druggable Genome, Secreted Protein
Protein Pathways	ECM-receptor interaction, Focal adhesion, Toll-like receptor signaling pathway
Full Length	Full L.

GENE INFORMATION

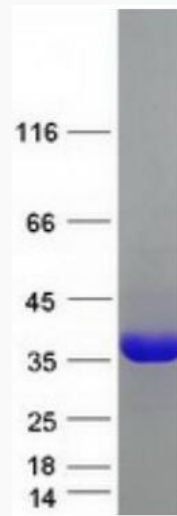
Gene Name	SPP1 secreted phosphoprotein 1 [Homo sapiens (human)]
Official Symbol	SPP1
Synonyms	OPN; BNSP; BSPI; ETA-1

 Tel: 1-631-559-9269 1-516-512-3133

 Email: info@creative-biomart.com  Fax: 1-631-938-8127

 45-1 Ramsey Road, Shirley, NY 11967, USA

Gene ID	6696
mRNA Refseq	NM_001040058.2
Protein Refseq	NP_001035147.1
MIM	166490
UniProt ID	P10451



Coomassie blue staining of purified SPP1 protein.

Tel: 1-631-559-9269 1-516-512-3133

Email: info@creative-biomart.com Fax: 1-631-938-8127

45-1 Ramsey Road, Shirley, NY 11967, USA