

Recombinant Human SPR protein, MBP-His-Avi-tagged, Biotinylated

Cat. No. SPR-4607H **Lot. No.** (See product label)

SPECIFICATION

Product Overview	Biotinylated Recombinant Human SPR protein(P35270)(1-261 aa), fused with N-terminal MBP-tagged and C-terminal His and Avi tag, was expressed in E.coli.
Species	Human
Source	E.coli
ProteinLength	1-261 aa
Conjugation/Label	Biotin
Form	For liquid formulations, the standard storage buffer consists of a Tris or PBS based solution supplemented with 5-50% glycerol. When provided as lyophilized powder, the product undergoes freeze-drying from a Tris- or PBS-based formulation containing 6% trehalose, adjusted to pH 8.0 prior to the lyophilization process.
Molecular Mass	75.8 kDa
AASequence	MEGGLGRAVCLLTGASRGFGRTLAPLLASLLSPGSVLVLSARNDEALRQLEAELGAE RSGLRVVRVPADLGAEAGLQQLLGALRELPRPKGLQRLLINNAGSLGDVSKGFVDL SDSTQVNNYWALNLTSMCLTSSVLKAFDPSPGLNRTVVNISSLCALQPFKGWALY CAGKAARDMLFQVLALEEPNVRVLNYAPGPLDTDMQQLARETSVDPDMRKGLQEL KAKGKLVDCVSAQKLLSLEKDEFKSGAHVDFYDK

 Tel: 1-631-559-9269 1-516-512-3133

 Email: info@creative-biomart.com  Fax: 1-631-938-8127

 45-1 Ramsey Road, Shirley, NY 11967, USA

Purity	Greater than 95% as determined by SDS-PAGE.
Storage	Store at -20°C/-80°C upon receipt, aliquoting is necessary for mutiple use. Avoid repeated freeze-thaw cycles.
Reconstitution	Please reconstitute protein indeionized sterile water to a concentration of 0.1-1.0 mg/mL. Aliquot for long-term storage at -80°C.
Conjugation	Biotin

GENE INFORMATION

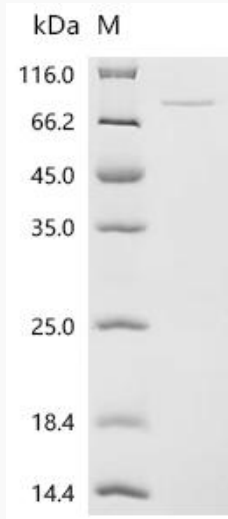
Gene Name	SPR sepiapterin reductase (7,8-dihydrobiopterin:NADP+ oxidoreductase) [Homo sapiens]
Official Symbol	SPR
Synonyms	SPR; sepiapterin reductase (7,8-dihydrobiopterin:NADP+ oxidoreductase); sepiapterin reductase; SDR38C1; short chain dehydrogenase/reductase family 38C; member 1; short chain dehydrogenase/reductase family 38C, member 1;
Gene ID	6697
mRNA Refseq	NM_003124
Protein Refseq	NP_003115
MIM	182125
UniProt ID	P35270

 Tel: 1-631-559-9269 1-516-512-3133

 Email: info@creative-biomart.com  Fax: 1-631-938-8127

 45-1 Ramsey Road, Shirley, NY 11967, USA

SDS-PAGE



 Tel: 1-631-559-9269 1-516-512-3133

 Email: info@creative-biomart.com  Fax: 1-631-938-8127

 45-1 Ramsey Road, Shirley, NY 11967, USA