

Recombinant Human SPR Protein, Myc/DDK-tagged, C13 and N15-labeled

Cat. No. SPR-5524H **Lot. No.** (See product label)

SPECIFICATION

Product Overview	SPR MS Standard C13 and N15-labeled recombinant protein (NP_003115) with a C-terminal MYC/DDK tag, was expressed in HEK293 cells.
Species	Human
Source	HEK293
Description	This gene encodes an aldo-keto reductase that catalyzes the NADPH-dependent reduction of pteridine derivatives and is important in the biosynthesis of tetrahydrobiopterin (BH4). Mutations in this gene result in DOPA-responsive dystonia due to sepiaterin reductase deficiency. A pseudogene has been identified on chromosome 1.
Molecular Mass	28 kDa
AA Sequence	MEGGLGRAVCLLTGASRGFGRTLAPLLASLLSPGSVLVLSARNDEALRQLEAELGAE RSGLRVVRVPADLGAEAGLQQLLGALRELPRPKGLQRLLINNAGSLGDVSKGFVDL SDSTQVNNYWALNLTSMCLTSSVLKAFPDPGLNRTVVNISSLCALQPFKGWALY CAGKAARDMLFQVLALEEPNVRVLNYAPGPLDTDMQQLARETSVDPDMRKGLQEL KAKGKLVDCVSAQKLLSLEKDEFKSGAHVDFYDKTRTRPLEQKLISEEDLAANDIL DYKDDDDKV
Purity	> 80% as determined by SDS-PAGE and Coomassie blue staining

 Tel: 1-631-559-9269 1-516-512-3133

 Email: info@creative-biomart.com  Fax: 1-631-938-8127

 45-1 Ramsey Road, Shirley, NY 11967, USA

Stability	Stable for 3 months from receipt of products under proper storage and handling conditions.
Storage	Store at -80 centigrade. Avoid repeated freeze-thaw cycles.
Concentration	50 µg/mL as determined by BCA
Storage Buffer	100 mM glycine, 25 mM Tris-HCl, pH 7.3.

GENE INFORMATION

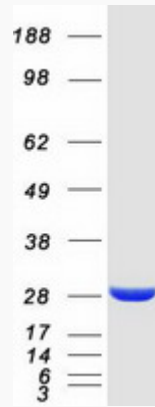
Gene Name	SPR sepiapterin reductase [<i>Homo sapiens</i> (human)]
Official Symbol	SPR
Synonyms	SPR; sepiapterin reductase (7,8-dihydrobiopterin:NADP+ oxidoreductase); sepiapterin reductase; SDR38C1; short chain dehydrogenase/reductase family 38C; member 1; short chain dehydrogenase/reductase family 38C, member 1;
Gene ID	6697
mRNA Refseq	NM_003124
Protein Refseq	NP_003115
MIM	182125
UniProt ID	P35270

 Tel: 1-631-559-9269 1-516-512-3133

 Email: info@creative-biomart.com  Fax: 1-631-938-8127

 45-1 Ramsey Road, Shirley, NY 11967, USA

SDS-PAGE



 Tel: 1-631-559-9269 1-516-512-3133

 Email: info@creative-biomart.com  Fax: 1-631-938-8127

 45-1 Ramsey Road, Shirley, NY 11967, USA