

## Recombinant Human SPRED2 Protein, His tagged

Cat. No. SPRED2-001H Lot. No. (See product label)

### SPECIFICATION

<b>Product Overview</b>	Recombinant Human SPRED2 Protein (117-297 aa) with His tag was expressed in E. coli.
<b>Species</b>	Human
<b>Source</b>	E. coli
<b>ProteinLength</b>	117-297 aa
<b>Storage</b>	Store it under sterile conditions at -20 to -80 centigrade. It is recommended that the protein be aliquoted for optimal storage. Avoid repeated freeze-thaw cycles.
<b>Storage Buffer</b>	Sterile PBS, pH7.4
<b>AA Sequence</b>	MKAIEDLIEGSTTSSSTIHNEAELGDDDVFTTATDSSSNSSQKREQPTRTISSTPSCE HRRITYTLGHLHDSYPTDHYHLDQPMRPYRQVSFPDDDEEIVRINPREKIWMGTGYED YRHAPVRGKYPDPSEDADSSYVRFKGEVPHKHDYNYPYVDSSDFGLGEDPKGRGG SVIKTQPSRGKSHHHHHHHH
<b>Endotoxin</b>	<1 EU/μg by LAL
<b>Purity</b>	> 90% by SDS-PAGE
<b>Concentration</b>	1 mg/mL by BCA

 Tel: 1-631-559-9269 1-516-512-3133

 Email: [info@creative-biomart.com](mailto:info@creative-biomart.com)  Fax: 1-631-938-8127

 45-1 Ramsey Road, Shirley, NY 11967, USA

## GENE INFORMATION

**Official Symbol**      [SPRED2](#)

**Synonyms**

SPRED2; sprouty-related, EVH1 domain containing 2; sprouty-related, EVH1 domain-containing protein 2; FLJ21897; FLJ31917; Spred 2; sprouty protein with EVH-1 domain 2, related sequence; Spred-2; MGC163164;

**Gene ID**                [200734](#)

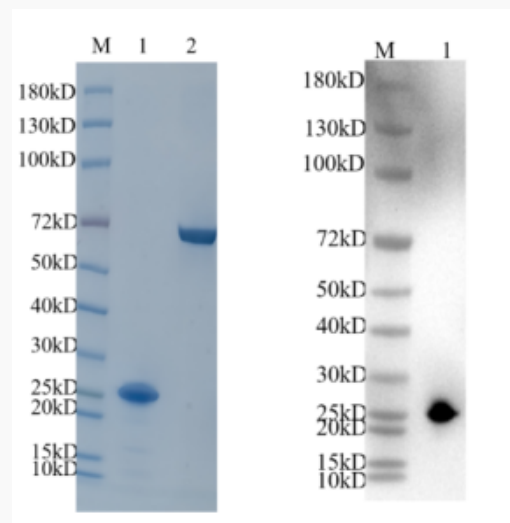
**mRNA Refseq**        [NM\\_001128210](#)

**Protein Refseq**        [NP\\_001121682](#)

**MIM**                    [609292](#)

**UniProt ID**             [Q7Z698](#)

**SDS-PAGE and WB**



 Tel: 1-631-559-9269    1-516-512-3133

 Email: [info@creative-biomart.com](mailto:info@creative-biomart.com)     Fax: 1-631-938-8127

 45-1 Ramsey Road, Shirley, NY 11967, USA



Reducing 4%-20% SDS-PAGE (CBB stained) and WB (Anti-His Mouse Monoclonal antibody) analysis profiles of purified SPRED2. 1. SPRED2: 1 µg 2. BSA: 1 µg

 Tel: 1-631-559-9269 1-516-512-3133

 Email: [info@creative-biomart.com](mailto:info@creative-biomart.com)  Fax: 1-631-938-8127

 45-1 Ramsey Road, Shirley, NY 11967, USA