

Recombinant Human SPRED2 protein, His & T7-tagged

Cat. No. SPRED2-1802H Lot. No. (See product label)

SPECIFICATION

| | |
|-------------------------|--|
| Product Overview | Recombinant Human SPRED2 aa. (Met1~Ala418 (Accession # Q7Z698)) fused with N-terminal His & T7 tag was produced in E. coli cells. |
| Species | Human |
| Source | E.coli |
| ProteinLength | Met1~Ala418 |
| Description | SPRED2 is a member of the Sprouty (see SPRY1; MIM 602465)/SPRED family of proteins that regulate growth factor-induced activation of the MAP kinase cascade (see MAPK1; MIM 176948) (Nonami et al., 2004 [PubMed 15465815]). |
| Form | Freeze-dried powder |
| Molecular Mass | Predicted Molecular Mass: 51.2kDa |
| Endotoxin | <1.0EU per 1ug (determined by the LAL method) |
| Purity | >95% |
| Applications | SDS-PAGE; WB; ELISA; IP. |
| Stability | The thermal stability is described by the loss rate. The loss rate was determined by accelerated thermal degradation test, that is, incubate the protein at 37°C for 48h, |

 Tel: 1-631-559-9269 1-516-512-3133

 Email: info@creative-biomart.com  Fax: 1-631-938-8127

 45-1 Ramsey Road, Shirley, NY 11967, USA

and no obvious degradation and precipitation were observed. The loss rate is less than 5% within the expiration date under appropriate storage condition.

Storage

Avoid repeated freeze/thaw cycles. Store at 2-8°C for one month. Aliquot and store at -80°C for 12 months.

Storage buffer

Supplied as lyophilized form in PBS, pH7.4, containing 5% trehalose, 0.01% sarcosyl.

Reconstitution

Reconstitute in sterile PBS, pH7.2-pH7.4.

Isoelectric Point

6.3

GENE INFORMATION

Gene Name

SPRED2 sprouty related EVH1 domain containing 2 [Homo sapiens (human)]

Official Symbol

SPRED2

Synonyms

SPRED2; sprouty related EVH1 domain containing 2; Spred-2; sprouty-related, EVH1 domain-containing protein 2; sprouty protein with EVH-1 domain 2, related sequence

Gene ID

200734

mRNA Refseq

NM_001128210.1

Protein Refseq

NP_001121682.1

UniProt ID

Q7Z698

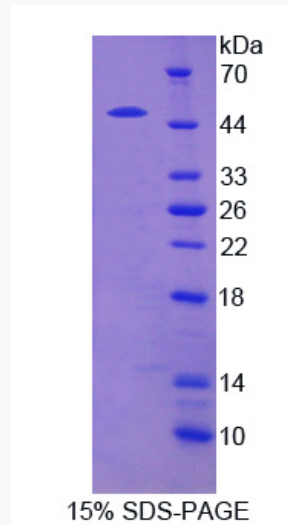
 Tel: 1-631-559-9269 1-516-512-3133

 Email: info@creative-biomart.com  Fax: 1-631-938-8127

 45-1 Ramsey Road, Shirley, NY 11967, USA



SDS-PAGE



Tel: 1-631-559-9269 1-516-512-3133

Email: info@creative-biomart.com Fax: 1-631-938-8127

45-1 Ramsey Road, Shirley, NY 11967, USA