

Recombinant Human SPRED3 Protein, Myc/DDK-tagged, C13 and N15-labeled

Cat. No. SPRED3-5457H **Lot. No.** (See product label)

SPECIFICATION

Product Overview	SPRED3 MS Standard C13 and N15-labeled recombinant protein (NP_001034705) with a C-terminal MYC/DDK tag, was expressed in HEK293 cells.
Species	Human
Source	HEK293
Description	This gene encodes a protein with a C-terminal Sprouty-like cysteine-rich domain (SRY) and an N-terminal Ena/Vasodilator-stimulated phosphoprotein (VASP) homology-1 (EVH-1) domain. The encoded protein is a member of a family of proteins that negatively regulates mitogen-activated protein (MAP) kinase signaling, particularly during organogenesis. Alternative splicing results in multiple transcript variants.
Molecular Mass	16.1 kDa
AA Sequence	MVRVRAVVMARDDSSGGWLPVGGGGLSQVSVCRVRGARPEGGARQGHYVIHGE RLRDQKTTLECTLKPLGVYNKVNPIFHHWSLGDCKFGLTFQSPAEAEDEFQKSLAAL AALGRGSLTPSSSSSSSSPSQDTAETPCPLTLSQYFRHMLCPTTRTRPLEQKLISEED LAANDILDYKDDDDKV
Purity	> 80% as determined by SDS-PAGE and Coomassie blue staining
Stability	Stable for 3 months from receipt of products under proper storage and handling

 Tel: 1-631-559-9269 1-516-512-3133

 Email: info@creative-biomart.com  Fax: 1-631-938-8127

 45-1 Ramsey Road, Shirley, NY 11967, USA

conditions.

Storage Store at -80 centigrade. Avoid repeated freeze-thaw cycles.

Concentration 50 µg/mL as determined by BCA

Storage Buffer 100 mM glycine, 25 mM Tris-HCl, pH 7.3.

GENE INFORMATION

Gene Name SPRED3 sprouty related EVH1 domain containing 3 [Homo sapiens (human)]

Official Symbol SPRED3

Synonyms SPRED3; sprouty-related, EVH1 domain containing 3; Eve-3; spread-3; sprouty-related, EVH1 domain-containing protein 3

Gene ID 399473

mRNA Refseq NM_001039616

Protein Refseq NP_001034705

MIM 609293

UniProt ID Q2MJR0

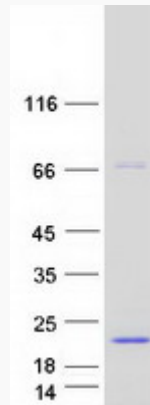
 Tel: 1-631-559-9269 1-516-512-3133

 Email: info@creative-biomart.com  Fax: 1-631-938-8127

 45-1 Ramsey Road, Shirley, NY 11967, USA



SDS-PAGE



Tel: 1-631-559-9269 1-516-512-3133

Email: info@creative-biomart.com Fax: 1-631-938-8127

45-1 Ramsey Road, Shirley, NY 11967, USA