

# Recombinant Human SPRR2F Protein, Myc/DDK-tagged, C13 and N15-labeled

**Cat. No.** SPRR2F-4569H    **Lot. No.** (See product label)

## SPECIFICATION

<b>Product Overview</b>	SPRR2F MS Standard C13 and N15-labeled recombinant protein (NP_001014450) with a C-terminal MYC/DDK tag, was expressed in HEK293 cells.
<b>Species</b>	Human
<b>Source</b>	HEK293
<b>Description</b>	SPRR2F (Small Proline Rich Protein 2F) is a Protein Coding gene. Diseases associated with SPRR2F include Adenine Phosphoribosyltransferase Deficiency and Necrotizing Ulcerative Gingivitis. Among its related pathways are Keratinization and Developmental Biology.
<b>Molecular Mass</b>	7.6 kDa
<b>AA Sequence</b>	MSYQQQCKQPCQPPPVCAPAKCPEPCPPPKCPEPCPPSKCPQSCPPQQCQQKC PPVTPSPPCQPKCPPKSKTRTRPLEQKLISEEDLAANDILDYKDDDDKV
<b>Purity</b>	> 80% as determined by SDS-PAGE and Coomassie blue staining
<b>Stability</b>	Stable for 3 months from receipt of products under proper storage and handling conditions.
<b>Storage</b>	Store at -80 centigrade. Avoid repeated freeze-thaw cycles.

 Tel: 1-631-559-9269    1-516-512-3133

 Email: [info@creative-biomart.com](mailto:info@creative-biomart.com)     Fax: 1-631-938-8127

 45-1 Ramsey Road, Shirley, NY 11967, USA

**Concentration** 50 µg/mL as determined by BCA

**Storage Buffer** 100 mM glycine, 25 mM Tris-HCl, pH 7.3.

## GENE INFORMATION

**Gene Name** *SPRR2F* small proline-rich protein 2F [ Homo sapiens (human) ]

**Official Symbol** *SPRR2F*

**Synonyms** SPRR2F; small proline-rich protein 2F; SPR-2F;

**Gene ID** 6705

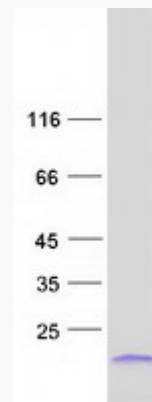
**mRNA Refseq** NM\_001014450

**Protein Refseq** NP\_001014450

**MIM** 617589

**UniProt ID** Q96RM1

## SDS-PAGE



 Tel: 1-631-559-9269 1-516-512-3133

 Email: [info@creative-biomart.com](mailto:info@creative-biomart.com)  Fax: 1-631-938-8127

 45-1 Ramsey Road, Shirley, NY 11967, USA