

Recombinant Human SPRY1 Protein (Gly118-Ser309), N-His tagged

Cat. No. SPRY1-5521H Lot. No. (See product label)

SPECIFICATION

Product Overview	Recombinant human SPRY1 (Gly118-Ser309) fused with the N-His tag was expressed in E. coli.
Species	Human
Source	E.coli
ProteinLength	Gly118-Ser309
Form	Lyophilized powder/frozen liquid
Molecular Mass	23.34 kDa
Purity	> 90 % as determined by SDS-PAGE
Notes	For research use only.
Storage	Use a manual defrost freezer and avoid repeated freeze thaw cycles. Store at 2 to 8 centigrade for one week. Store at -20 to -80 centigrade for twelve months from the date of receipt.
Storage Buffer	0.01M PBS, pH 7.4, 0.02 % NLS
Reconstitution	Reconstitute in sterile water for a stock solution.

 Tel: 1-631-559-9269 1-516-512-3133

 Email: info@creative-biomart.com  Fax: 1-631-938-8127

 45-1 Ramsey Road, Shirley, NY 11967, USA

Shipping They are shipped out with dry ice/blue ice unless customers require otherwise.

GENE INFORMATION

Gene Name SPRY1 sprouty homolog 1, antagonist of FGF signaling (Drosophila) [Homo sapiens (human)]

Official Symbol SPRY1

Synonyms SPRY1; sprouty homolog 1, antagonist of FGF signaling (Drosophila); sprouty (Drosophila) homolog 1 (antagonist of FGF signaling); protein sprouty homolog 1; hSPRY1; spry-1; sprouty, Drosophila, homolog of, 1 (antagonist of FGF signaling);

Gene ID 10252

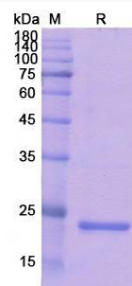
mRNA Refseq NM_001258038

Protein Refseq NP_001244967

MIM 602465

UniProt ID O43609

SDS-PAGE



 Tel: 1-631-559-9269 1-516-512-3133

 Email: info@creative-biomart.com  Fax: 1-631-938-8127

 45-1 Ramsey Road, Shirley, NY 11967, USA