

Recombinant Human SPRYD7 Protein, Myc/DDK-tagged, C13 and N15-labeled

Cat. No. SPRYD7-6167H **Lot. No.** (See product label)

SPECIFICATION

Product Overview	C13orf1 MS Standard C13 and N15-labeled recombinant protein (NP_065189) with a C-terminal MYC/DDK tag, was expressed in HEK293 cells.
Species	Human
Source	HEK293
Description	SPRYD7 (SPRY Domain Containing 7) is a Protein Coding gene.
Molecular Mass	21.5 kDa
AA Sequence	MATSVLCCLRCCRDGGTGHIPKEMPAVQLDTQHMGTDVVIVKNGRRICGTGGCLA SAPLHQNKSYFEFKIQSTGIWGIGVATQKVNLNQIPLGRDMHSLVMRNDGALYHNNE EKNRLPANSLPQEGDVVGITYDHVELNVYLNKGNMHCPASGIRGTVYPVVYVDDSAI LDCQFSEFYHTPPPGFEKILFEQQIFTRTRPLEQKLISEEDLAANDILDYKDDDDKV
Purity	> 80% as determined by SDS-PAGE and Coomassie blue staining
Stability	Stable for 3 months from receipt of products under proper storage and handling conditions.
Storage	Store at -80 centigrade. Avoid repeated freeze-thaw cycles.
Concentration	50 µg/mL as determined by BCA

 Tel: 1-631-559-9269 1-516-512-3133

 Email: info@creative-biomart.com  Fax: 1-631-938-8127

 45-1 Ramsey Road, Shirley, NY 11967, USA

Storage Buffer 100 mM glycine, 25 mM Tris-HCl, pH 7.3.

GENE INFORMATION

Gene Name [SPRYD7](#) [SPRY domain containing 7 \[Homo sapiens \(human\) \]](#)

Official Symbol [SPRYD7](#)

Synonyms [SPRYD7](#); [SPRY domain containing 7](#); [C13orf1, chromosome 13 open reading frame 1](#); [SPRY domain-containing protein 7](#); [CLLD6](#); [CLL deletion region gene 6 protein](#); [chronic lymphocytic leukemia deletion region gene 6 protein](#); [C13orf1](#);

Gene ID [57213](#)

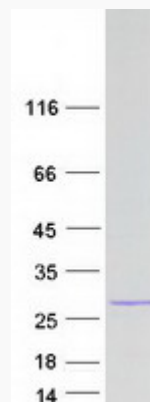
mRNA Refseq [NM_020456](#)

Protein Refseq [NP_065189](#)

MIM [607866](#)

UniProt ID [Q5W111](#)

SDS-PAGE



 Tel: 1-631-559-9269 1-516-512-3133

 Email: info@creative-biomart.com  Fax: 1-631-938-8127

 45-1 Ramsey Road, Shirley, NY 11967, USA