

Recombinant Human SPSB2 Protein, GST-tagged

Cat. No. SPSB2-5319H Lot. No. (See product label)

SPECIFICATION

Product Overview	Human GRCC9 partial ORF (AAH02983, 1 a.a. - 90 a.a.) recombinant protein with GST-tag at N-terminal.
Species	Human
Source	Wheat Germ
Description	This gene encodes a suppressor of cytokine signaling (SOCS) family member, and it belongs to the subfamily of proteins containing a central SPRY (repeats in splA and RyR) domain and a C-terminal SOCS box. This gene is present in a gene-rich cluster on chromosome 12p13 in the vicinity of the CD4 antigen and triosephosphate isomerase genes. Alternative splicing results in multiple transcript variants. [provided by RefSeq]
Molecular Mass	35.64 kDa
AA Sequence	MGQTALAGGSSSTPTPQALYPDLSCPEGLEELLSAPPPDLGAQRRHGWNPKDCSE NIEVKEGGLYFERRPVAQSTDGARGKRGYSRGLHA
Applications	Enzyme-linked Immunoabsorbent Assay Western Blot (Recombinant protein) Antibody Production Protein Array
Notes	Best use within three months from the date of receipt of this protein.

 Tel: 1-631-559-9269 1-516-512-3133

 Email: info@creative-biomart.com  Fax: 1-631-938-8127

 45-1 Ramsey Road, Shirley, NY 11967, USA

Storage Store at -80 centigrade. Aliquot to avoid repeated freezing and thawing.

Storage Buffer 50 mM Tris-HCl, 10 mM reduced Glutathione, pH=8.0 in the elution buffer.

GENE INFORMATION

Gene Name SPSB2 spIA/ryanodine receptor domain and SOCS box containing 2 [Homo sapiens]

Official Symbol SPSB2

Synonyms SPSB2; spIA/ryanodine receptor domain and SOCS box containing 2; SPRY domain-containing SOCS box protein 2; GRCC9; SSB 2; gene-rich cluster protein C9; SPRY domain-containing SOCS box protein SSB-2; SSB2; MGC2519; FLJ17395;

Gene ID 84727

mRNA Refseq NM_001146316

Protein Refseq NP_001139788

MIM 611658

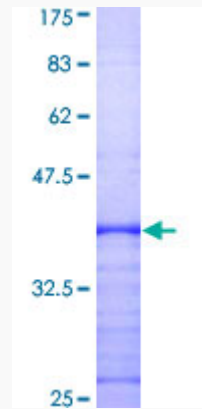
UniProt ID Q99619

 Tel: 1-631-559-9269 1-516-512-3133

 Email: info@creative-biomart.com  Fax: 1-631-938-8127

 45-1 Ramsey Road, Shirley, NY 11967, USA

**Quality Control
Testing**



12.5% SDS-PAGE Stained with Coomassie Blue.

 Tel: 1-631-559-9269 1-516-512-3133

 Email: info@creative-biomart.com  Fax: 1-631-938-8127

 45-1 Ramsey Road, Shirley, NY 11967, USA