

Recombinant Human v-src sarcoma (Schmidt-Ruppin A-2) viral oncogene homolog (avian) Protein, His-tagged

Cat. No. SRC-001H Lot. No. (See product label)

SPECIFICATION

Product Overview	Recombinant Human SRC Protein (1-79aa) with C-His-tag was expressed in E. coli.
Species	Human
Source	E.coli
ProteinLength	1-79aa
Description	This gene is highly similar to the v-src gene of Rous sarcoma virus. This proto-oncogene may play a role in the regulation of embryonic development and cell growth. The protein encoded by this gene is a tyrosine-protein kinase whose activity can be inhibited by phosphorylation by c-SRC kinase. Mutations in this gene could be involved in the malignant progression of colon cancer. Two transcript variants encoding the same protein have been found for this gene.
Tag	C-His
Molecular Mass	9 kDa
AA Sequence	MGSNKSKPKDASQRRRSLEPAENVHGAGGGAFPASQTPSKPASADGHRGPSAAF APAAAEPKLFGGFNSSDVTSPQRAHHHHHHHH
Endotoxin	< 1 EU/μg by LAL.

 Tel: 1-631-559-9269 1-516-512-3133

 Email: info@creative-biomart.com  Fax: 1-631-938-8127

 45-1 Ramsey Road, Shirley, NY 11967, USA

Purity	> 90 % by SDS-PAGE
Storage	Store it under sterile conditions at -20 to -80 centigrade. It is recommended that the protein be aliquoted for optimal storage. Avoid repeated freeze-thaw cycles.
Concentration	1 mg/mL by BCA
Storage Buffer	Sterile PBS, pH7.4

GENE INFORMATION

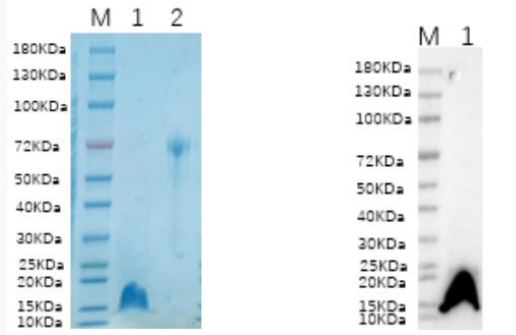
Gene Name	SRC v-src sarcoma (Schmidt-Ruppin A-2) viral oncogene homolog (avian) [Homo sapiens (human)]
Official Symbol	SRC
Synonyms	SRC; v-src sarcoma (Schmidt-Ruppin A-2) viral oncogene homolog (avian); SRC1, v src avian sarcoma (Schmidt Ruppin A 2) viral oncogene homolog; proto-oncogene tyrosine-protein kinase Src; ASV; c src; proto-oncogene c-Src; tyrosine kinase pp60c-src; tyrosine-protein kinase SRC-1; protooncogene SRC, Rous sarcoma; SRC1; c-SRC; p60-Src
Gene ID	6714
mRNA Refseq	NM_005417
Protein Refseq	NP_005408
MIM	190090
UniProt ID	P12931

 Tel: 1-631-559-9269 1-516-512-3133

 Email: info@creative-biomart.com  Fax: 1-631-938-8127

 45-1 Ramsey Road, Shirley, NY 11967, USA

**Reducing 4 %-20 %
SDS-PAGE (CBB
stained) and WB
(Anti-His Mouse
Monoclonal
antibody) analysis
profiles of purified
SRC.**



1. SRC
2. BSA

 Tel: 1-631-559-9269 1-516-512-3133

 Email: info@creative-biomart.com  Fax: 1-631-938-8127

 45-1 Ramsey Road, Shirley, NY 11967, USA