

Active Recombinant Human SRC Protein, GST-tagged

Cat. No. SRC-004H Lot. No. (See product label)

SPECIFICATION

Product Overview	Active recombinant full length human SRC Protein (1-536) with a N-terminal GST tag was expressed in insect cells.
Species	Human
Source	Insect Cells
ProteinLength	1-536
Description	This gene is highly similar to the v-src gene of Rous sarcoma virus. This proto-oncogene may play a role in the regulation of embryonic development and cell growth. The protein encoded by this gene is a tyrosine-protein kinase whose activity can be inhibited by phosphorylation by c-SRC kinase. Mutations in this gene could be involved in the malignant progression of colon cancer. Two transcript variants encoding the same protein have been found for this gene.
Bio-activity	Tris buffered solution containing MgCl ₂ , 10μM ATP, 10 μg Poly-Glu, Tyr 4:1 substrate and 30 ng of Src. Incubate at 30 centigrade for 45 min, and measure ATP via luminescent assay. Luminescence is inversely correlated to kinase activity.
Molecular Mass	86 kDa
Purity	≥60% as determined by SDS-PAGE
Applications	Enzyme assay

 Tel: 1-631-559-9269 1-516-512-3133

 Email: info@creative-biomart.com  Fax: 1-631-938-8127

 45-1 Ramsey Road, Shirley, NY 11967, USA

Stability	≥ 6 months
Storage	At -80 centigrade.
Storage Buffer	25 mM Tris-HCl, pH 8.0, with 69 mM sodium chloride, 1.35 mM potassium chloride, 0.025% Tween-20, 125 mM imidazole, 50% glycerol, and 3 mM DTT

GENE INFORMATION

Gene Name	SRC SRC proto-oncogene, non-receptor tyrosine kinase [Homo sapiens (human)]
Official Symbol	SRC
Synonyms	SRC; SRC proto-oncogene, non-receptor tyrosine kinase; ASV; SRC1; THC6; c-SRC; p60-Src; proto-oncogene tyrosine-protein kinase Src; proto-oncogene c-Src; protooncogene SRC, Rous sarcoma; tyrosine kinase pp60c-src; tyrosine-protein kinase SRC-1; v-src avian sarcoma (Schmidt-Ruppin A-2) viral oncogene homolog; EC 2.7.10.2
Gene ID	6714
mRNA Refseq	NM_005417
Protein Refseq	NP_005408
MIM	190090
UniProt ID	P12931

 Tel: 1-631-559-9269 1-516-512-3133

 Email: info@creative-biomart.com  Fax: 1-631-938-8127

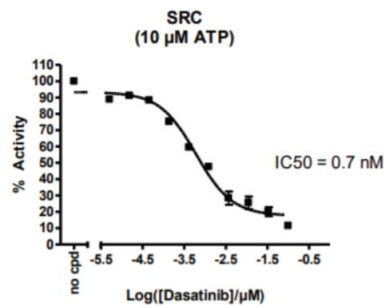
 45-1 Ramsey Road, Shirley, NY 11967, USA

**SDS-PAGE analysis
of SRC**

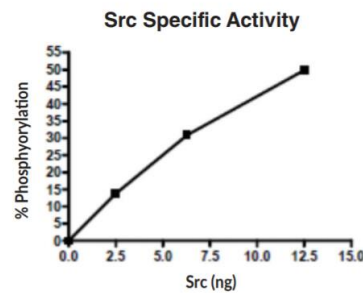


Lane 1: SRC (4 µg)
Lane 2: MW Markers

SRC (10 µM ATP)



Specific Activity



Tel: 1-631-559-9269 1-516-512-3133

Email: info@creative-biomart.com Fax: 1-631-938-8127

45-1 Ramsey Road, Shirley, NY 11967, USA