

# Active Recombinant Human SRC Protein (Full Length), N-FLAG

Cat. No. SRC-10H Lot. No. (See product label)

## SPECIFICATION

<b>Product Overview</b>	Recombinant human SRC protein was expressed in a baculovirus expression system as the full length protein (accession number NP_005408.1) with an N-terminal FLAG tag.
<b>Species</b>	Human
<b>Source</b>	Insect Cells
<b>ProteinLength</b>	Full Length
<b>Description</b>	This gene is highly similar to the v-src gene of Rous sarcoma virus. This proto-oncogene may play a role in the regulation of embryonic development and cell growth. The protein encoded by this gene is a tyrosine-protein kinase whose activity can be inhibited by phosphorylation by c-SRC kinase. Mutations in this gene could be involved in the malignant progression of colon cancer. Two transcript variants encoding the same protein have been found for this gene.
<b>Bio-activity</b>	1 $\mu$ M TK substrate was incubated with different concentrations of SRC protein in a reaction system containing 1x Enzymatic Buffer, 5 mM MgCl <sub>2</sub> , 1 mM DTT and 100 $\mu$ M ATP for 1 hour. The 10 $\mu$ L detection reagents containing TK antibody and SA-XL665, each of which was 1:100 diluted with 1x Detection Buffer were added and incubated with the reactions for 1 hour. All the operations and reactions were performed at room temperature, and HTRF KinASE TK assay was used to detect the

 Tel: 1-631-559-9269 1-516-512-3133

 Email: [info@creative-biomart.com](mailto:info@creative-biomart.com)  Fax: 1-631-938-8127

 45-1 Ramsey Road, Shirley, NY 11967, USA

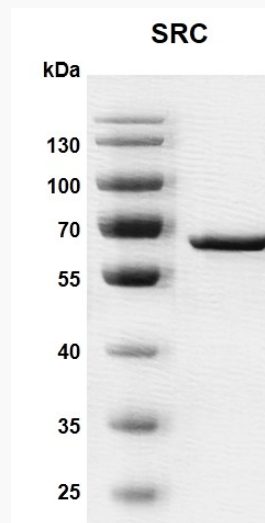
	enzymatic activity.
<b>Molecular Mass</b>	61.1 kDa
<b>Purity</b>	> 95%
<b>Applications</b>	This protein is suitable for use in binding assays, inhibitor screening, and selectivity profiling.
<b>Notes</b>	This product is for research use only and is not for use in diagnostic procedures. This product is guaranteed for 6 months from date of arrival.
<b>Storage</b>	Recombinant proteins in solution are temperature sensitive and must be stored at -80 centigrade to prevent degradation. Avoid repeated freeze/thaw cycles and keep on ice when not in storage.
<b>Concentration</b>	0.25 µg/µL
<b>Storage Buffer</b>	25 mM HEPES-NaOH pH7.5, 300 mM NaCl, 10% glycerol, 0.04% Triton X-100 and 0.5 mM TCEP.
<b>GENE INFORMATION</b>	
<b>Gene Name</b>	<b>SRC SRC proto-oncogene, non-receptor tyrosine kinase [ Homo sapiens (human) ]</b>
<b>Official Symbol</b>	<b>SRC</b>
<b>Synonyms</b>	SRC; SRC proto-oncogene, non-receptor tyrosine kinase; ASV; SRC1; THC6; c-SRC; p60-Src; proto-oncogene tyrosine-protein kinase Src; proto-oncogene c-Src; protooncogene SRC, Rous sarcoma; tyrosine kinase pp60c-src; tyrosine-protein kinase SRC-1; v-src avian sarcoma (Schmidt-Ruppin A-2) viral oncogene homolog;

 Tel: 1-631-559-9269 1-516-512-3133

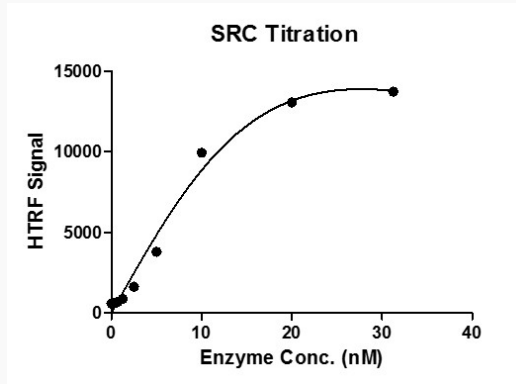
 Email: [info@creative-biomart.com](mailto:info@creative-biomart.com)  Fax: 1-631-938-8127

 45-1 Ramsey Road, Shirley, NY 11967, USA

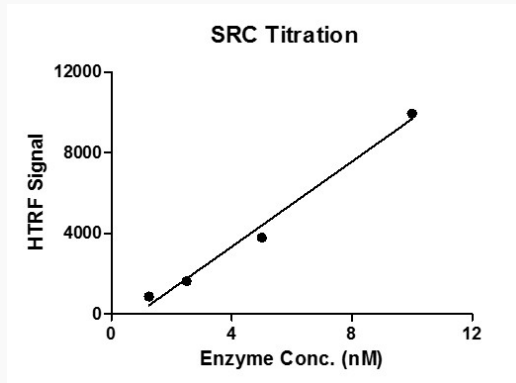
EC 2.7.10.2


**Gene ID** 6714**mRNA Refseq** NM\_005417**Protein Refseq** NP\_005408**MIM** 190090**UniProt ID** P12931**SDS-PAGE** Tel: 1-631-559-9269 1-516-512-3133 Email: [info@creative-biomart.com](mailto:info@creative-biomart.com)  Fax: 1-631-938-8127 45-1 Ramsey Road, Shirley, NY 11967, USA

HTRF assay for SRC  
protein activity



HTRF assay for SRC  
protein activity



 Tel: 1-631-559-9269 1-516-512-3133

 Email: [info@creative-biomart.com](mailto:info@creative-biomart.com)  Fax: 1-631-938-8127

 45-1 Ramsey Road, Shirley, NY 11967, USA