

Active Recombinant Human SRC protein, GST-tagged

Cat. No. SRC-1100H Lot. No. (See product label)

SPECIFICATION

Product Overview	Recombinant Human SRC fused with GST tag at N-terminal was expressed in E. coli.
Species	Human
Source	E.coli
Description	<p>SRC family belongs to non-receptor tyrosine kinases. SRC was originally identified as a transforming protein of the Rous sarcoma virus (RSV) that had enzymatic ability to phosphorylate tyrosine in protein substrates. SRC is overexpressed and activated in a large number of human malignancies and has been linked to the development of cancer and progression to distant metastases. In addition to increasing cell proliferation, a key role of SRC in cancer seems to be the ability to promote invasion and motility, functions that might contribute to tumour progression.</p>
Form	50mM Tris-HCl, pH 7.5, 150mM NaCl, 0.25mM DTT, 0.1mM EGTA, 0.1mM EDTA, 0.1mM PMSF, 25% glycerol.
Bio-activity	98 nmol/min/mg
Molecular Mass	~83 kDa
Purity	>95%
Applications	Kinase Assay, Western Blot

 Tel: 1-631-559-9269 1-516-512-3133

 Email: info@creative-biomart.com  Fax: 1-631-938-8127

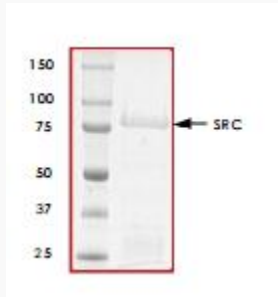
 45-1 Ramsey Road, Shirley, NY 11967, USA

Stability	1 year at -70 centigrade from the date of shipment
Storage	Store product at -70 centigrade. For optimal storage, aliquot target into smaller quantities after centrifugation and store at recommended temperature. For most favorable performance, avoid repeated handling and multiple freeze/thaw cycles.
Concentration	0.1 µg/µl
GENE INFORMATION	
Gene Name	SRC SRC proto-oncogene, non-receptor tyrosine kinase [Homo sapiens]
Official Symbol	SRC
Synonyms	ASV; SRC1; THC6; c-SRC; p60-Src; proto-oncogene c-Src; protooncogene SRC, Rous sarcoma; tyrosine kinase pp60c-src; tyrosine-protein kinase SRC-1; v-src avian sarcoma (Schmidt-Ruppin A-2) viral oncogene homolog
Gene ID	6714
mRNA Refseq	NM_005417
Protein Refseq	NP_005408
MIM	190090
UniProt ID	P12931

 Tel: 1-631-559-9269 1-516-512-3133

 Email: info@creative-biomart.com  Fax: 1-631-938-8127

 45-1 Ramsey Road, Shirley, NY 11967, USA



 Tel: 1-631-559-9269 1-516-512-3133

 Email: info@creative-biomart.com  Fax: 1-631-938-8127

 45-1 Ramsey Road, Shirley, NY 11967, USA