

Active Recombinant Human SRC, GST-tagged

Cat. No. SRC-191H Lot. No. (See product label)

SPECIFICATION

Species	Human
Source	E.coli
Description	<p>Src (p60c-src) is a 60 kDa cytoplasmic tyrosine kinase with functions in the regulation of cell division, cell-matrix adhesion, and cell-cell adhesion. Src-GST family tyrosine kinases participate in signal transduction of different classes of membrane receptors, including receptor tyrosine kinases and G-protein coupled receptors. The SrcGST has been generated by fusing GST N-terminal to human c-Src allowing expression in <i>E. coli</i> and purification by affinity chromatography with GSH beads. The preparation is >90% homogenous in SDS-PAGE and has a specific activity of >3000 U/mg (1 U is defined as transfer of 1 pMol phosphate to the substrate peptide AAEEIYGEFEAKKKK per minute at 30°C). The fusion protein has been successfully used to label phosphatase substrates. The GST-Tag facilitates the protein's application in typical GST pull-down assays.</p>
Form	Liquid. Supplied in 50 mM Tris-HCl pH 8.0, 100 mM NaCl and 1 mM DTT.
Purity	≥90% by SDS-PAGE.
Application	> 650 U/g (1 U is defined as transfer of 1 pMol phosphate to the substrate peptide AAEEIYG-EFEAKKKK per minute at 30°C).
Usage	For in vitro use only.

 Tel: 1-631-559-9269 1-516-512-3133

 Email: info@creative-biomart.com  Fax: 1-631-938-8127

 45-1 Ramsey Road, Shirley, NY 11967, USA

Storage Quality guaranteed for 12 months store at -80°C. Avoid freeze / thaw cycles.

GENE INFORMATION

Gene Name SRC v-src sarcoma (Schmidt-Ruppin A-2) viral oncogene homolog (avian) [Homo sapiens]

Synonyms SRC; v-src sarcoma (Schmidt-Ruppin A-2) viral oncogene homolog (avian); ASV; SRC1; c-SRC; p60-Src; proto-oncogene tyrosine-protein kinase SRC; OTTHUMP00000174476; OTTHUMP00000174477; tyrosine kinase pp60c-src; tyrosine-protein kinase SRC-1; protooncogene SRC, Rous sarcoma; EC 2.7.10.2; pp60c-src; v-src avian sarcoma (Schmidt-Ruppin A-2) viral oncogenehomolog

Gene ID 6714

mRNA Refseq NM_005417

Protein Refseq NP_005408

MIM 190090

UniProt ID P12931

Chromosome Location 20q12-q13

Pathway Adherens junction; Endocytosis; Epithelial cell signaling in Helicobacter pylori infection; ErbB signaling pathway; Focal adhesion; Gap junction; GnRH signaling pathway; Tight junction; VEGF signaling pathway

Function ATP binding; SH2 domain binding; SH3/SH2 adaptor activity; non-membrane spanning protein tyrosine kinase activity; nucleotide binding; protein binding;

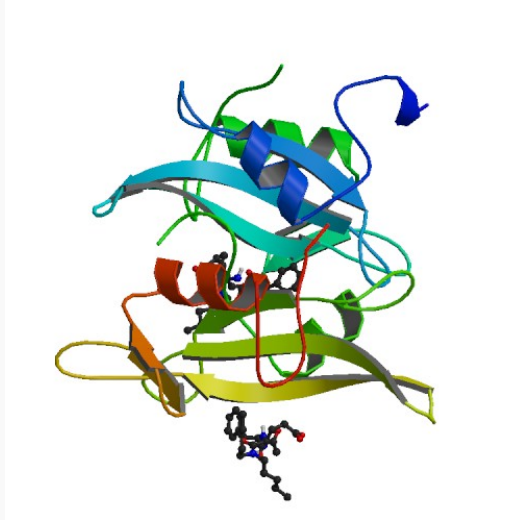
 Tel: 1-631-559-9269 1-516-512-3133

 Email: info@creative-biomart.com  Fax: 1-631-938-8127

 45-1 Ramsey Road, Shirley, NY 11967, USA

transferase activity

PDB rendering based
on 1a07.



 Tel: 1-631-559-9269 1-516-512-3133

 Email: info@creative-biomart.com  Fax: 1-631-938-8127

 45-1 Ramsey Road, Shirley, NY 11967, USA