

# Recombinant Human SRC Protein, Myc/DDK-tagged, C13 and N15-labeled

**Cat. No.** SRC-1923H    **Lot. No.** (See product label)

## SPECIFICATION

### Product Overview

SRC MS Standard C13 and N15-labeled recombinant protein (NP\_938033) with a C-terminal MYC/DDK tag, was expressed in HEK293 cells.

### Species

Human

### Source

HEK293

### Description

This gene is highly similar to the v-src gene of Rous sarcoma virus. This proto-oncogene may play a role in the regulation of embryonic development and cell growth. The protein encoded by this gene is a tyrosine-protein kinase whose activity can be inhibited by phosphorylation by c-SRC kinase. Mutations in this gene could be involved in the malignant progression of colon cancer. Two transcript variants encoding the same protein have been found for this gene.

### Molecular Mass

59.7 kDa

### AA Sequence

MGSNKS PKDASQRRRSLEPAENVHGAGGGAFPASQTSPK PASADGHRGPSAAF  
 APAAAEPKLFGGFNSSDTVTSPQRAGPLAGGVTTFFVALYDYESRTETDLSFKKGER  
 LQIVNNTEGDWWLAHSLSTGQTGYIPSNYVAPSDSIQAE EWYFGKITRRESERLLL N  
 AENPRGTFLVRESETTKGAYCLSVSDFDNAKGLNVKHYKIRKLDSSGGFYITSRTQFN  
 SLQQLVAYYSKHADGLCHRLTTVCPTSKPQTQGLAKDAWEIPRESLRLEVKLGQGC  
 FGEVWMGTWNGTTRVAIKTLKPGTMSPEAFLQEAQVMKKLRHEKLVQLYAVVSEE  
 PIYIVTEYMSKGSLLDFLKGETGKYLRLPQLVDMAAQIASGMAYVERMNYVHRDLRA

 Tel: 1-631-559-9269    1-516-512-3133

 Email: [info@creative-biomart.com](mailto:info@creative-biomart.com)     Fax: 1-631-938-8127

 45-1 Ramsey Road, Shirley, NY 11967, USA

ANILVGENLVCKVADFGLARLIEDNEYTARQGAKFPIKWTAPEAALYGRFTIKSDVWS  
 FGILLTELTTKGRVPYPGMVNREVLQDQVERGYRMPCCPECPESLHDLMCQCWRKE  
 PEERPTFEYLQAFLEDYFTSTEPQYQPGENLTRTRPLEQKLISEEDLAANDILDYKDD  
 DDKV

**Purity** > 80% as determined by SDS-PAGE and Coomassie blue staining

**Stability** Stable for 3 months from receipt of products under proper storage and handling conditions.

**Storage** Store at -80 centigrade. Avoid repeated freeze-thaw cycles.

**Concentration** 50 µg/mL as determined by BCA

**Storage Buffer** 100 mM glycine, 25 mM Tris-HCl, pH 7.3.

## GENE INFORMATION

**Gene Name** SRC SRC proto-oncogene, non-receptor tyrosine kinase [ Homo sapiens (human) ]

**Official Symbol** SRC

**Synonyms** SRC; v-src sarcoma (Schmidt-Ruppin A-2) viral oncogene homolog (avian); SRC1, v src avian sarcoma (Schmidt Ruppin A 2) viral oncogene homolog; proto-oncogene tyrosine-protein kinase Src; ASV; c src; proto-oncogene c-Src; tyrosine kinase pp60c-src; tyrosine-protein kinase SRC-1; protooncogene SRC, Rous sarcoma; SRC1; c-SRC; p60-Src;

**Gene ID** 6714

**mRNA Refseq** NM\_198291

 Tel: 1-631-559-9269 1-516-512-3133

 Email: [info@creative-biomart.com](mailto:info@creative-biomart.com)  Fax: 1-631-938-8127

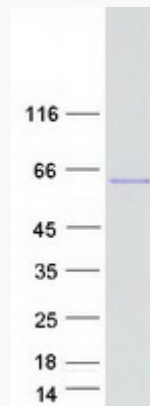
 45-1 Ramsey Road, Shirley, NY 11967, USA

**Protein Refseq**      NP\_938033

**MIM**                    190090

**UniProt ID**            P12931

**SDS-PAGE**



 Tel: 1-631-559-9269    1-516-512-3133

 Email: [info@creative-biomart.com](mailto:info@creative-biomart.com)     Fax: 1-631-938-8127

 45-1 Ramsey Road, Shirley, NY 11967, USA