

Recombinant Human SRC, SH3 Domain, GST-tagged

Cat. No. SRC-192H **Lot. No.** (See product label)

SPECIFICATION

Species	Human
Source	E.coli
Description	N-terminal GST tagged Src SH3 domain. Src SH3 domain is the SH3 domain of Src tyrosine kinase. SH3 domains are known to bind proline rich peptides. The Src SH3 domain has been expressed as a fusion protein with GST allowing expression in E. coli and purification by affinity chromatography. The native GST-Src-SH3 is the ideal tool for <i>in vitro/in vivo</i> investigations of the behaviour of cellular prions. It may be used for protein-protein interaction studies as well as for <i>in vitro/in vivo</i> conversion studies. The GST-Tag facilitates the protein's application in typical GST pull-down assays.
Form	Lyophilized.
Purity	≥90% by SDS-PAGE.
Usage	For <i>in vitro</i> use only.
Storage	Quality guaranteed for 12 months store at -80°C. Avoid freeze / thaw cycles.

GENE INFORMATION

Gene Name	SRC v-src sarcoma (Schmidt-Ruppin A-2) viral oncogene homolog (avian) [Homo sapiens]
Synonyms	SRC; v-src sarcoma (Schmidt-Ruppin A-2) viral oncogene homolog (avian); ASV;

 Tel: 1-631-559-9269 1-516-512-3133

 Email: info@creative-biomart.com  Fax: 1-631-938-8127

 45-1 Ramsey Road, Shirley, NY 11967, USA

SRC1; c-SRC; p60-Src; proto-oncogene tyrosine-protein kinase SRC; OTTHUMP00000174476; OTTHUMP00000174477; tyrosine kinase pp60c-src; tyrosine-protein kinase SRC-1; protooncogene SRC, Rous sarcoma; EC 2.7.10.2; pp60c-src; v-src avian sarcoma (Schmidt-Ruppin A-2) viral oncogenehomolog

Gene ID [6714](#)

mRNA Refseq [NM_005417](#)

Protein Refseq [NP_005408](#)

MIM [190090](#)

UniProt ID [P12931](#)

Chromosome Location 20q12-q13

Pathway Adherens junction; Endocytosis; Epithelial cell signaling in Helicobacter pylori infection; ErbB signaling pathway; Focal adhesion; Gap junction; GnRH signaling pathway; Tight junction; VEGF signaling pathway

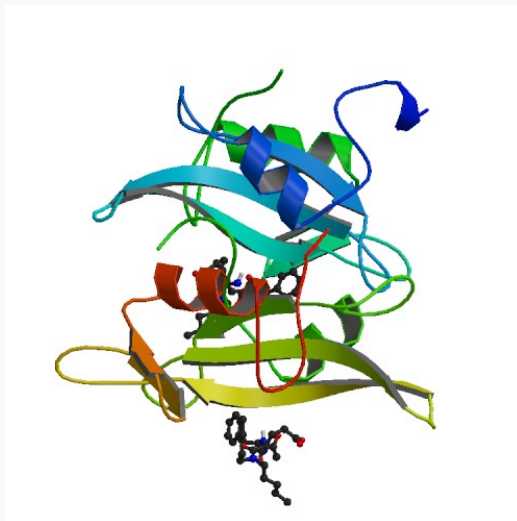
Function ATP binding; SH2 domain binding; SH3/SH2 adaptor activity; non-membrane spanning protein tyrosine kinase activity; nucleotide binding; protein binding; transferase activity

 Tel: 1-631-559-9269 1-516-512-3133

 Email: info@creative-biomart.com  Fax: 1-631-938-8127

 45-1 Ramsey Road, Shirley, NY 11967, USA

PDB rendering based
on 1a07.



 Tel: 1-631-559-9269 1-516-512-3133

 Email: info@creative-biomart.com  Fax: 1-631-938-8127

 45-1 Ramsey Road, Shirley, NY 11967, USA