

## Recombinant Human SRC protein, His-tagged

Cat. No. SRC-22H Lot. No. (See product label)

### SPECIFICATION

|                         |  |
|-------------------------|--|
| <b>Product Overview</b> | Recombinant Human SRC(1-536aa) fused with His tag was expressed in E. coli.  |
| <b>Species</b>          | Human  |
| <b>Source</b>           | E.coli   |
| <b>ProteinLength</b>    | 1-536 a.a.   |
| <b>Description</b>      | This gene is highly similar to the v-src gene of Rous sarcoma virus. This proto-oncogene may play a role in the regulation of embryonic development and cell growth. The protein encoded by this gene is a tyrosine-protein kinase whose activity can be inhibited by phosphorylation by c-SRC kinase. Mutations in this gene could be involved in the malignant progression of colon cancer. Two transcript variants encoding the same protein have been found for this gene. |
| <b>Form</b>             | The purified protein was Lyophilized from sterile PBS (58mM Na <sub>2</sub> HPO <sub>4</sub> , 17mM NaH <sub>2</sub> PO <sub>4</sub> , 68mM NaCl, pH8.). Normally 5 % - 8 % trehalose and mannitol are added as protectants before lyophilization.   |
| <b>AA Sequence</b>      | MGSNKS PKDASQRRRSLEPAENVHGAGGGAFPASQTPSKPASADGHRGPSAAF<br>APAAAEPKLFGGFNSSDTVTSPQRAGPLAGGVTTFFVALYDYESRTETDLSFKKGER<br>LQIVNNTTEGDWWLAHSLSTGQGTGYIPSNYVAPSDSIQAEEWYFGKITRRESERLLL<br>AENPRGTFVRESETTKAYCLSVSDFDNAKGLNVKHYKIRKLDSSGGFYITSRTQFN<br>SLQQLVAYYSKHADGLCHRLTTCPTSKPQTQGLAKDAWEIPRESLRLEVKLGQGC<br>FGEVWMGTWNGTTRVAIKTLKPGTMSPEAFLQEAQVMKKLRHEKLVQLYAVVSEE  |

Tel: 1-631-559-9269 1-516-512-3133

Email: [info@creative-biomart.com](mailto:info@creative-biomart.com) Fax: 1-631-938-8127

45-1 Ramsey Road, Shirley, NY 11967, USA

PIYIVTEYMSKGSLLDFLKGETGKYLRLPQLVDMAAQIASGMAYVERMNYVHRDLRA  
 ANILVGENLVCKVADFGLARLIEDNEYTARQGAKFPIKWTAPEAALYGRFTIKSDVWS  
 FGILLTELTTKGRVPYPGMVNREVLQDQVERGYRMPCCPECPESLHDLMCQCWRKE  
 PEERPTFEYLQAFLEDYFTSTEPQYQPGENL

**Purity** 90%, by SDS-PAGE with Coomassie Brilliant Blue staining.

**Storage**

Stability and Storage: Store for up to 12 months at -20 centigrade to -80 centigrade as lyophilized powder.

Storage of Reconstituted Protein: Short-term storage: Store at 2-8 centigrade for two weeks.

Long-term storage: Aliquot and store at -20 centigrade to -80 centigrade for up to 6 months, buffer containing 50% glycerol is recommended for reconstitution. Avoid repeat freeze-thaw cycles.

**Reconstitution**

Reconstitute at 0.25 g/μl in 200 μl sterile water for short-term storage.

Reconstitution with 200 μl 50% glycerol solution is recommended for longer term storage.

If a different concentration is needed for your purposes please adjust the reconstitution volume as required (please note: the ion concentration of the final solution will vary according to the volume used).

Note: Centrifuge vial before opening. When reconstituting, gently pipet and wash down the sides of the vial to ensure full recovery of the protein into solution.

## GENE INFORMATION

**Gene Name** SRC SRC proto-oncogene, non-receptor tyrosine kinase [ Homo sapiens ]

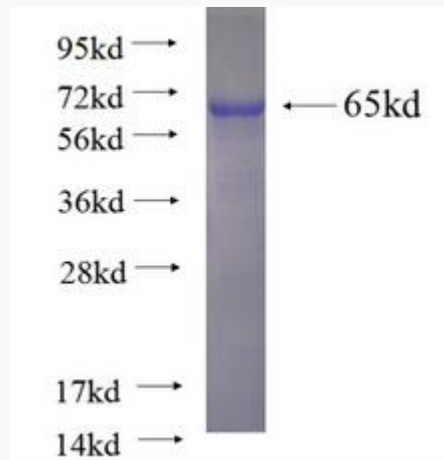
**Official Symbol** SRC

 Tel: 1-631-559-9269 1-516-512-3133

 Email: [info@creative-biomart.com](mailto:info@creative-biomart.com)  Fax: 1-631-938-8127

 45-1 Ramsey Road, Shirley, NY 11967, USA

|                       |   |
|-----------------------|---|
| <b>Synonyms</b>       | ASV; SRC1; THC6; c-SRC; p60-Src; proto-oncogene c-Src; protooncogene SRC, Rous sarcoma; tyrosine kinase pp60c-src; tyrosine-protein kinase SRC-1; v-src avian sarcoma (Schmidt-Ruppin A-2) viral oncogene homolog |
| <b>Gene ID</b>        | 6714  |
| <b>mRNA Refseq</b>    | NM_005417   |
| <b>Protein Refseq</b> | NP_005408   |
| <b>MIM</b>            | 190090  |
| <b>UniProt ID</b>     | P12931  |



 Tel: 1-631-559-9269 1-516-512-3133

 Email: [info@creative-biomart.com](mailto:info@creative-biomart.com)  Fax: 1-631-938-8127

 45-1 Ramsey Road, Shirley, NY 11967, USA