

# Recombinant Full Length Human SRC Protein, C-Flag-tagged

Cat. No. SRC-407HFL Lot. No. (See product label)

## SPECIFICATION

<b>Product Overview</b>	Recombinant Full Length Human SRC Protein, fused to Flag-tag at C-terminus, was expressed in Mammalian cells.
<b>Species</b>	Human
<b>Source</b>	Mammalian Cells
<b>Description</b>	This gene is highly similar to the v-src gene of Rous sarcoma virus. This proto-oncogene may play a role in the regulation of embryonic development and cell growth. The protein encoded by this gene is a tyrosine-protein kinase whose activity can be inhibited by phosphorylation by c-SRC kinase. Mutations in this gene could be involved in the malignant progression of colon cancer. Two transcript variants encoding the same protein have been found for this gene.
<b>Form</b>	25 mM Tris HCl, pH 7.3, 100 mM glycine, 10% glycerol.
<b>Molecular Mass</b>	59.7 kDa
<b>AA Sequence</b>	MGSNKS PKDASQRRRSLEPAENVHGAGGGAFPASQTPSKPASADGHRGPSAAF APAAAEPKLFGGFNSS DVTSPQRAGPLAGGVTTFVALYDYESRTETDLSFKKGER LQIVNNTGDDWWLAHSLSTGQTGYIPSNYV APSDSIQAEWYFGKITRRESERLLL AENPRGTFLVRESETTKGAYCLVSDFDNAKGLNVKHYKIRKL DSGGFYITSRTQFN SLQQLVAYYSKHADGLCHRLTTCPTSKPQTQGLAKDAWEIPRESLRLEVKLGQGC FGEVWMGTWNGTTRVAIKTLKPGTMSPEAFLQEAQVMKKLRHEKLVQLYAVVSEE PIYIVTEYMSKGSLL DFLKGETGKYLRPQLVDMAAQIASGMAYVERMNYVHRDLRA

 Tel: 1-631-559-9269 1-516-512-3133

 Email: [info@creative-biomart.com](mailto:info@creative-biomart.com)  Fax: 1-631-938-8127

 45-1 Ramsey Road, Shirley, NY 11967, USA

ANILVGENLVCKVADFGLARLIEDNEYT ARQGAKFPIKWTAPEAALYGRFTIKSDVW  
 SFGILLTELTTKGRVPYPGMVNREVLDQVERGYRMPCPPEC  
 PESLHDLMCQCWRKEPEERPTFEYLQAFLEDYFTSTEPQYQPGENLTRTRPLEQKL  
 ISEEDLAANDILDYKDDDDKV

<b>Purity</b>	> 80% as determined by SDS-PAGE and Coomassie blue staining.
<b>Stability</b>	Stable for 12 months from the date of receipt of the product under proper storage and handling conditions. Avoid repeated freeze-thaw cycles.
<b>Storage</b>	Store at -80 centigrade.
<b>Concentration</b>	>50 ug/mL as determined by microplate BCA method.
<b>Preparation</b>	Recombinant protein was captured through anti-DDK affinity column followed by conventional chromatography steps.
<b>Protein Families</b>	Druggable Genome, ES Cell Differentiation/IPS, Protein Kinase, Stem cell relevant signaling - JAK/STAT signaling pathway
<b>Protein Pathways</b>	Adherens junction, Endocytosis, Epithelial cell signaling in Helicobacter pylori infection, ErbB signaling pathway, Focal adhesion, Gap junction, GnRH signaling pathway, Tight junction, VEGF signaling pathway
<b>Full Length</b>	Full L.

## GENE INFORMATION

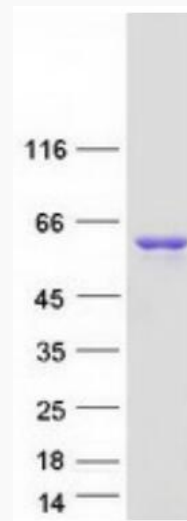
<b>Gene Name</b>	<a href="#">SRC SRC proto-oncogene, non-receptor tyrosine kinase [ Homo sapiens (human) ]</a>
<b>Official Symbol</b>	<a href="#">SRC</a>

 Tel: 1-631-559-9269 1-516-512-3133

 Email: [info@creative-biomart.com](mailto:info@creative-biomart.com)  Fax: 1-631-938-8127

 45-1 Ramsey Road, Shirley, NY 11967, USA

<b>Synonyms</b>	ASV; SRC1; THC6; c-SRC; p60-Src
<b>Gene ID</b>	6714
<b>mRNA Refseq</b>	NM_005417.5
<b>Protein Refseq</b>	NP_005408.1
<b>MIM</b>	190090
<b>UniProt ID</b>	P12931



Coomassie blue staining of purified SRC protein.

 Tel: 1-631-559-9269 1-516-512-3133

 Email: [info@creative-biomart.com](mailto:info@creative-biomart.com)  Fax: 1-631-938-8127

 45-1 Ramsey Road, Shirley, NY 11967, USA