

Recombinant Human SRC, GST-tagged, Active

Cat. No. SRC-433H Lot. No. (See product label)

SPECIFICATION

Product Overview	Recombinant full-length Rous sarcoma virus SRC was expressed by baculovirus in Sf9 insect cells using a N-terminal GST tag. MW = 85 kDa.
Species	Human
Source	Sf9 Cells
Description	SRC family belongs to non-receptor tyrosine kinases. SRC was originally identified as a transforming protein of the Rous sarcoma virus (RSV) that had enzymatic ability to phosphorylate tyrosine in protein substrates. SRC is overexpressed and activated in a large number of human malignancies and has been linked to the development of cancer and progression to distant metastases. In addition to increasing cell proliferation, a key role of SRC in cancer seems to be the ability to promote invasion and motility, functions that might contribute to tumour progression.
Sequence	Full-length.
Applications	Kinase Assay, Western Blot.
Storage And Stability	Store product at -70°C. For optimal storage, aliquot target into smaller quantities after centrifugation and store at recommended temperature. For most favorable performance, avoid repeated handling and multiple freeze/thaw cycles.

GENE INFORMATION

 Tel: 1-631-559-9269 1-516-512-3133

 Email: info@creative-biomart.com  Fax: 1-631-938-8127

 45-1 Ramsey Road, Shirley, NY 11967, USA

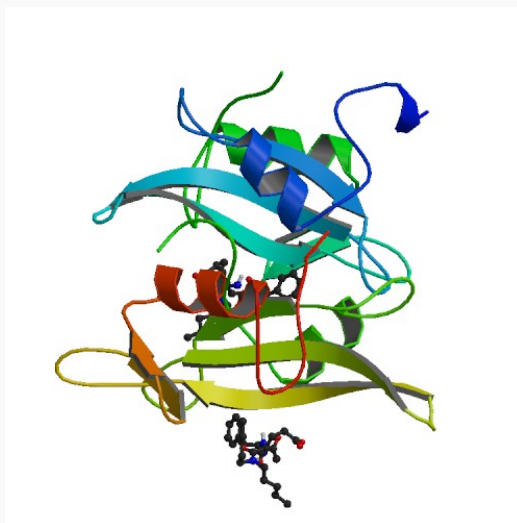
Gene Name	SRC v-src sarcoma (Schmidt-Ruppin A-2) viral oncogene homolog (avian) [Homo sapiens]
Synonyms	SRC; v-src sarcoma (Schmidt-Ruppin A-2) viral oncogene homolog (avian); ASV; SRC1; c-SRC; p60-Src; proto-oncogene tyrosine-protein kinase SRC; OTTHUMP00000174476; OTTHUMP00000174477; tyrosine kinase pp60c-src; tyrosine-protein kinase SRC-1; protooncogene SRC, Rous sarcoma; EC 2.7.10.2; pp60c-src; v-src avian sarcoma (Schmidt-Ruppin A-2) viral oncogene homolog
Gene ID	6714
mRNA Refseq	NM_005417
Protein Refseq	NP_005408
MIM	190090
UniProt ID	P12931
Chromosome Location	20q12-q13
Pathway	Adherens junction; Endocytosis; Epithelial cell signaling in Helicobacter pylori infection; ErbB signaling pathway; Focal adhesion; Gap junction; GnRH signaling pathway; Tight junction; VEGF signaling pathway
Function	ATP binding; SH2 domain binding; SH3/SH2 adaptor activity; non-membrane spanning protein tyrosine kinase activity; nucleotide binding; protein binding; transferase activity

 Tel: 1-631-559-9269 1-516-512-3133

 Email: info@creative-biomart.com  Fax: 1-631-938-8127

 45-1 Ramsey Road, Shirley, NY 11967, USA

PDB rendering based
on 1a07.



 Tel: 1-631-559-9269 1-516-512-3133

 Email: info@creative-biomart.com  Fax: 1-631-938-8127

 45-1 Ramsey Road, Shirley, NY 11967, USA